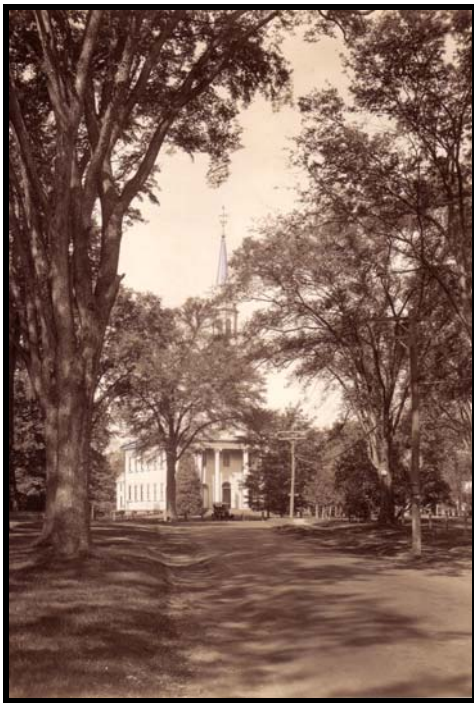


**The First
Congregational Church
Of Old Lyme**

ANNUAL REPORT 2014

*In 2015 the First Congregational Church will
celebrate 350 years of history*



“Then”.....



.....and Now

A place of grace

THE FIRST CONGREGATIONAL CHURCH OF OLD LYME

ANNUAL MEETING
Sunday, January 25, 2015
12:00 pm

AGENDA

1. Invocation
2. Call to the Meeting Greg Hack, Assistant Clerk
3. Approval of the Minutes of the January 2014 Annual Meeting
4. Reports of Church Officers, Boards and Committees:
 - a The Ministers
 - b Church Clerk Joan May
 - c Board of Deacons Dan Renn
 - d Board of Stewardship Alan Howell
 - e Board of Youth Education Suzanne McCormack
 - f Board of Adult Education Sharon Howell
 - g Board of Missions Stefanie Hall
 - h South Lyme Union Chapel Erin Grayson & Marvin Schutt
 - i Ladies Benevolent Society Jane Stubenbord
 - j Board of Trustees David Long
 - k Treasurer Robert McCracken
5. Adoption of the 2015 Budget Jeanne Thomas & Robert McCracken
6. Election of Officers, Board Members and Deacons Emeriti Bruce Anderson
7. Old Business
8. New Business
9. Adjournment & Benediction The Rev. Dr. Steven R. Jungkeit

Cover photographs.

The First Congregational Church of Old Lyme, circa 1920. Courtesy Old Lyme Historical Society.

The First Congregational Church of Old Lyme, 2014. Photography by James Meehan

TABLE OF CONTENTS - 2013 ANNUAL REPORT

Minutes of the Annual Meeting - January 27, 2013	Page 4-5
Senior Minister's Report - Steven R. Jungkeit	6
Senior Associate Minister - Carleen R. Gerber	7
Associate Minister - Christopher D. Solimene	8-9
Board of Deacons	10
Tree of Life Report - David W. Good	11-12
Treasurer's Report- 2014 Results	13-14
Treasurer's Report - Analysis of Revenues & Expenses	15-20
Treasurer's Report-Balance Sheet	21
Treasurer's Report-Exchange & Escrow Funds & Total Benevolence Giving	22
Treasurer's Report-Sources & Uses of Funds	23
A New Way to Look at Our Church's Budget	24-25
Budget Overview	26
Proposed 2014 Operating Budget	27-33
Board of Trustees	34-36
Church Council	36
Endowment Committee	37-38
Board of Stewardship	39
Board of Youth Education	40-41
Senior High Pilgrim Fellowship	42
Board of Music and the Arts	42
Senior & Children's Choir	43
Board of Missions	44
Mission Outreach	45
Adult Education	46
South Africa Partnership Committee	47
Tribal Crafts	48-49
Green Grass Partnership	50-51
South Lyme Union Chapel	52
Committee for the Environment	53
Ladies Benevolent Society	53
Ladies Benevolent Society Financial Report 2013	54
Clerk's Report	55
New Members in 2014	56
Nominating Committee Recommendations 2014	57-59
Deacons Emeriti	60

Minutes of the Annual Meeting
First Congregational Church of Old Lyme
February 2, 2014

The meeting was called to order by Henry May, Chair of the Church Council, at 12:15 PM. This was followed by the invocation, given by Reverend Becky Crosby.

Gregory Hack, the Assistant Church Clerk, made the Call to the Annual Meeting, stating that the purpose of the meeting is as follows:

- To receive the reports of the ministers, boards and committees of the church, and the church officers for 2013
- To approve the budget for the year 2014
- To receive and approve the report of the nominating committee
- To elect officers and board members for the coming year
- To conduct such old and new business as brought before the Congregation

Greg Hack acknowledged the presence of a quorum of at least 40 church members.

Bob McCracken moved to waive the reading of the minutes from the 2013 Annual Meeting, as the minutes were printed in the Annual Report. The motion passed, and the minutes of the 2013 Annual Meeting were approved.

Individual reports were then presented. All those offering reports referred to the printed reports that appear in the 2013 Annual Report.

- Becky Crosby, Associate Minister. Becky is so pleased to have Steve with us. She gave many thanks to the search committee, and thanks to the Sunday school teachers and staff. Becky also gave thanks to Stewardship chair Roger Smith (Becky served as stewardship liaison), and thanked chair of youth education Susan Lang. Becky spoke to how the church is a great joy in her life.
- Steve Jungkeit, Senior Minister. Steve shared his thoughts on what has been a very smooth and successful transition, with thanks to the congregation.....it is good to be in this place! Steve gave thanks to the Board of Stewardship, and shared his excitement for the church's missions and partnerships. The Tree of Life program continues to be a success. The recent Middle East trip included approximately 40 folks. Further, he spoke to the music program under the leadership of Simon, Joel, and Lisa. The Church's 350-year anniversary is coming up! "This is a place where bones are made strong," as noted in his printed report.
- Carleen Gerber, Senior Associate Minister, is on sabbatical. Her report is printed in the Annual Report.
- Joanie May, Church Clerk. Joanie reviewed that this has been a "normal" year. More transfers off of the membership lists were made, upon the ministers' recommendation to more accurately reflect the Church's current membership.
- Bruce Anderson, Chair of Board of Deacons, stated how this has been an exciting year in light of the transition to Steve's ministry. The children's choir and other choirs are growing and stronger under Lisa's and Simon's leadership.
- Roger Smith gave the report for the Board of Stewardship. Roger gave thanks to the board, and for the Statements of Intent totaling over \$600,000 thus far. This is the first time since 2006-07 that our total has reached \$600,000, and that is with 10 percent fewer members.
- Susan Lang gave the report for the Board of Youth Education, reviewing the "God's Neighborhood" curriculum, "seeing, loving, and following". Youth Education wants kids to feel loved.

- Sharon Howell, Adult Education, noted that the speakers are set for the spring. They are presently looking for ideas for the fall.
- Stephanie Hall spoke for the Board of Missions. She thanked the board members, and noted that 60% of mission gifts supported local groups, 20% mission education and partnerships, and the last 20% for commitment to UCC.
- Ariana Eaton gave the South Lyme Chapel report.
- Susan Anctil read Jane Stubenbord's report for the LBS. This year the White Elephant Sale generated \$82,000 profit, an all-time record! Many thanks to Bob Davis. The Elephants in Winter sale also has become important. Monthly luncheons were well attended as well.
- Scott Mahon gave the Trustees report, and asked to keep David Long in our prayers. Scott shared the excellent collaboration and coordination of the Trustees and its connections with the endowment, stewardship, and property committees. Scott reviewed work on the parsonage, thanked Mo Anctil for his work, and discussed future planning for upkeep and maintenance.
- Bob McCracken gave the Treasurer's Report, referring to details of the printed report. Both revenues and expenses for the year were under budget, with expenses \$31,000 under, and revenues \$19,000 under. Big items completed included painting of Sheffield and Hoag, and necessary improvements to the parsonage (upgrade to well, water heater, alarm, and other items). It has been a real joy to work with the staff and ministers.
- Bob McCracken also presented the budget, outlining a "new way to look at the budget" with pie charts in the annual report, as a "statement of our values". Each main portion of the pie chart was explained in greater detail to better understand what the church actually does. The Church is indeed a "place of grace" and the budget reflects that. We should all be very proud of how our financial resources are used. We should have confidence in the revenues number, as we are ahead of 2012 and 2013 and we are not yet finished with the campaign. For a 2-year period the trustees approved using up to 7% of the endowment (typically 5%)--this will be the second year. Looking for a bigger music budget with 350th anniversary celebration in the future plans. See the specifics in the proposed budget overview. Bob reviewed some IRS rules related to the housing allowance.

The pay of lay employees is up. We are also paying back a loan of \$280,000 for roof replacement. A 10-year loan was taken out for that purpose. We have earned much more on the endowment this year than we have paid in interest.

The proposed budget is \$817,772.50. Extensive discussion ensued, with questions and clarifications regarding the budget, use of endowment funds, membership numbers.

The motion to approve the budget was passed in a unanimous vote.

David Speirs and Virginia Spiers were named as Deacons Emeriti. David spoke, noting that he appreciates the honor, and that he has given and received much from the Church over the years.

The slate of officers as proposed by the Nominating committee was approved.

No other old or new business was raised.

Closing prayer by Steve Jungkeit.

The meeting adjourned at 1:35 pm.

Respectfully submitted,
 Gregory A. Hack
 Assistant Church Clerk

Steve Jungkeit, Senior Minister's Annual Report

Dear friends,

I've been looking back at some of the newsletters from this past year as a way of reminding myself of all that took place among us, and I found myself lingering on an image I developed while traveling through the heart of Palestine: the rolling seminary. I was writing from a bus, and outside I could see villages and road signs, checkpoints and deserted land, even while inside the bus lively and contentious debates were happening all around me. What we were witnessing and arguing about was difficult, to say the least, but even so I felt a sense of profound gladness to be there, doing the kind of work we were doing. It was an experiential classroom, and we were all being formed in a whirlpool of realities we don't ordinarily encounter in our workaday worlds. If the Bible and theology are to mean anything, I believe they have to do with the sorts of things one sees on a rolling seminary.

In addition to the educational work we were doing, the bus became a metaphor for the kind of church that I believe we're called to be. As I reflect back on the year behind us, and look forward to what lies ahead, that's the image I'd like for us all to keep in mind. We're on the move together, in ever changing contexts and locales, always having to figure out what our faith means here and now – rather than what it meant last year, or last decade, or in the last century. It's not that we shouldn't be planted somewhere. We are. Nor is it that we can isolate ourselves on a bus while rolling past scenes of struggle. We don't. Even as we're rooted in the town of Old Lyme, we're asked to be on the move – both literally and figuratively, our minds and hearts always open to new and different realities, ones that have the capacity to shake us and reorient us, to guide us and to move us. Whether that involves traveling on one of our journeys, or simply paying attention to the world at large while lending a hand in ways large and small around here, we're all on the move together.

And it's been a good year in that regard. We have been a community on the move. In addition to the Tree of Life trip, our Senior Pilgrim Fellowship visited Haiti with Becky and Ted Crosby, while a group of adults and young people made the annual pilgrimage out to the Green Grass community in South Dakota. Closer to home, a large number of folks served meals in New London, and a good many more served in our own Food Pantry on Saturday mornings. We welcomed Chris Solimene as our new associate minister for youth and their families, even as Becky Crosby transitioned out of that role to devote more time to Haiti. From Stewardship to the White Elephant Sale, from organizing our Tribal Crafts store to providing for the fellowship hour after every service, from teaching in our Sunday School program to maintaining our historic buildings, from organizing our Tree of Life conferences to serving on one of our many boards, I find myself amazed by the spirit of giving and shared effort that animates our church. We truly do move together, and I couldn't be more grateful for that.

In the coming year we'll have opportunities to reflect on the ways our church has moved together for 350 years now. From the earliest days of our history, the wider events of the world have required those in our community to respond. Early anxieties about otherness (i.e. witchcraft) and revolutionary fervor, revivalism and industrialization, a Civil War and several world conflicts have all had profound effects, even here in Old Lyme. Those events have necessitated movement and change, and those who came before us did their best to respond with faith rather than fear, with engagement rather than isolation. I've been learning about the history of our congregation, and if I read correctly, we've always been a community on the move – a rolling church.

I say it often, but only because the words are true – I so value being on the move with you. And I'm eager to see where we roll in the year ahead.

Steve

Annual Report of the Senior Associate Minister 2014

The year 2014 was another busy one in the life of this congregation.

Over the course of the year, we have labored on to do the work which is set before us. Our many mission programs continue to flourish, and I am grateful to this congregation for its steadfast commitment to outreach and mission work both in our local region and beyond, into the wider world.

Our continued support for the Tree of Life trips to the war-torn Middle East is a critical part of our commitment to peace and justice, and we thank David Good, now serving as our Minister Emeritus, for his willingness to continue to lead all the work of the Tree of Life enterprise. Our Board of Missions has approved the formal establishment of a committee to help with our work with the people of Beit Sahour and the Tree of Life ministry.

We were fortunate to have another group visit our partner Green Grass community on the Cheyenne River Sioux Reservation in June. Steve Jungkeit, with help from Stephanie Kenney, led this past year's trip, which included a camping trip for a number of adults in the Black Hills at the conclusion of a week of activities in the Green Grass community.

Becky and Ted Crosby, with the help of Julie Martel, took a group of our church's teenagers to Haiti in the Spring, which was a wonderful experience for all. The Board of Missions has also asked for the creation of a Haitian Outreach committee to help with this partnership work in Haiti.

Our partnership with the Shoreline Soup Kitchens continues to enable us to house the largest meal site and food distribution center in our 17-town region. And we continue to work alongside the Homeless Hospitality Center in New London, enabling many volunteers to be at work in the chronic issues of homelessness. This Fall we began taking youth in our Senior High Pilgrim fellowship there once every month to provide a meal and fellowship. Julie Kuja and her team continue to orchestrate a monthly meal at the large and critically important New London Meal Site.

Truthfully, it is only by the grace and generosity of literally hundreds of volunteers working so tirelessly and with such commitment, that we have been able to sustain a network of mission engagement of which we can all be very, very proud. We really are a **priesthood of believers**, and I thank each and every one of you who have served the mission and work of this church with such generosity.

Pastoral care is an important part of our life together. All our ministers work together to try to reach out all those in need. But we continue to need the help of all our members and friends to notify us if there are needs of which we may not be aware. During this past Fall, with the help of our Board of Deacons, we have begun to rekindle a number of support groups, hopefully strengthening the fabric of support we give to one another.

It is a privilege for me to work alongside the other members of our dedicated staff. And I hope and pray I have been able to minister to the members and friends of this congregation with as much grace and compassion as you have all shown to me and my family over many years.

Respectfully Submitted,
Carleen R. Gerber
Senior Associate Minister

Associate Minister's 2014 Annual Report

"I hear and I forget. I see and I remember. I do and I understand." – An Old Proverb

What a joy it has been to join The First Congregational Church of Old Lyme Family and be a part of a community who puts faith into action and embraces their children with such enthusiasm. I express sincere gratitude for the kind welcome I have received from the Congregation, Board of Youth Education, the staff, clergy, parents/guardians and especially the youth of this church! The goal of my ministry involving children and youth is to partner with the parents/guardians, faith leaders and congregation so that together we may approach our youth's faith formation by celebrating each individual's uniqueness and embracing each one in the loving affirmation of who they are and who they can become in God's wondrous creation. I have enjoyed my work here since starting last August and look forward to our exciting journey together.

There are so many wonderful accomplishments our children and family ministries have made this year. I would say the greatest joy has been to see the children experiencing a community of faith that is modeled in loving God by reaching into the broken places in this world with hope. We are all partners in creation- the congregation adults, the parents, the clergy and staff and the Christian Education Board. And what a joy we have in the many faith leaders, Confirmation mentors and helpers. Please join me in expressing our most sincere appreciation for them. Indeed our Church School and Confirmation leaders make the world a better place by making a difference in a child's life!

God works in mysterious ways! What touches one of us with a lasting impression may not have the same effect on another. In order to encourage our children to experience their faith in a way that is as unique and individual as each of them – we have implemented the Rotational Learning style. Children now learn about Bible Stories and aspects of faith formation through a multi-sensory approach that incorporates such activities as cooking, science, art, games, music, drama and story. For some of us, we need to taste the message to understand and for others, perhaps acting out a story, physically moving in a game or measuring ingredients of a recipe connects a message more concretely. Positive feedback indicates our children and families are embracing this style of learning.

Confirmation at First Church celebrates our personal journey of faith alongside our participation in the church family, the church community and the church universal! Lively discussions on numerous topics of faith are held in classes and with mentors. All these experiences along with the meaningful Night Watch retreat in NYC create thought-provoking and heartfelt statements of faith – a journey that is as ever changing as our still-speaking God.

Participating in God's creation means caring for God's people. Both the Senior and Junior Pilgrim Fellowship programs encourage our youth to engage directly with those who need our help, care and compassion through doing. The SPF goes monthly to host an interactive evening of fellowship and meal with the New London Homeless Hospitality Center. Planning for the SPF's Midnight Run, which brings much needed warm clothing directly to those who need it in NYC is well underway. The JPF has been collecting dental hygiene products to send to places in the world without the benefits of the good dental care we receive. JPF is also considering other ways to make a difference with the environment and exploring additional opportunities for understanding and partaking in

(continued)

social justice. I appreciate the continued efforts and commitment of the PF Ministry, which includes Allison Hine, Deanna and Danny Donovan, Heather Stone and the parents/guardians who make this program the meaningful experience it is.

Another newly developing ministry is The All Church Events. Whether apple picking and making pies to share with members of the church community, creating Advent Wreaths, participating as performer or spectator at a Coffee House Dessert Event or taking in a good family movie while JPS serves popcorn, the fellowship and activities are giving opportunities for deepening relationships and building community. Sharing bonds with each other adds meaning to our lives and makes evident God's presence in one another.

Worshiping alongside you through prayer, song and communion fills my life with a sense of faith community. Having opportunity to wrestle with the ways we become what God calls us to be in sermons exercises my mind and creative gifts. Visiting with young and old alike to share in the thanksgivings and laments of our lives nourishes my call to ministry. I give thanks to God for this and for you.

I leave you with words by Howard Thurman, a minister, theologian and rights activist, who gives keen insight into the examples of "how" we might continue our shared ministry:

When the song of the angels is stilled,
When the star in the sky is gone,
When the kings and princes are home,
When the shepherds are back with their flock,
The work of Christmas begins:
To find the lost,
To heal the broken,
To feed the hungry,
To release the prisoner,
To rebuild the nations,
To bring peace among people,
To make music in the heart.

Our eyes are on the star that promises light in the darkened corners of this world. Together, with God's and each other's hope, we journey on!

Peace and Blessings on the Journey!
Christopher Solimene
Associate Minister

BOARD OF DEACONS

2014 Annual Report

The Board of Deacons oversees the spiritual and devotional life of FCCOL and promotes Christian fellowship. We carry these responsibilities out in a variety of ways, including serving Communion, ushering, assimilating new members, organizing coffee hours, and supervising several church boards and committees. Deacons serve as liaisons to the Boards of Youth and Adult Education, Missions, and Music and the Arts, and we thank their members for welcoming us throughout the year.

Our individual responsibilities during 2014 were as follows:

Secretary	Jen Hall
Board Liaisons:	
Church Council	Daniel Renn
Youth Education	Lucia Kelsey
Adult Education	Wendy Rieder/Alexandra Eadie-Friedmann
Missions	Julie Kuja
Music and the Arts	Stephanie Kenny
Membership	Dan Renn/Nick Westbrook
Communion	Julie Kuja
Memorial Garden	Julie Kuja
Hospitality	Lina Tuck/Lucia Kelsey
Ushers Coordinator	
9:00 AM	Dan Renn
11:00 AM	Nick Westbrook

Our key focus in 2014 was ongoing transitions in leadership. We accepted Rev. Becky Crosby's retirement and helped the church celebrate her tenure here. The Board has supported new Associate Minister for Youth and Family Ministry Chris Solimene as joins our church family. Leadership at the South Lyme Chapel is also in transition as Rev. Cynthia Willauer has retired and Erin Grayson is currently serving as minister there. We thank the congregation for your support through all of these changes and celebrate the contributions of all of our ministers.

The Board has been working to revitalize our membership efforts to attract prospective members to our church and to better integrate new members. We assigned individual Deacons to each of our new members this year, introducing them to other members and to activities and missions of interest.

Each year it is the Deacons' privilege to recommend up to 2 members to be honored with the title Deacon Emeritus. We were pleased to recognize 2 long-time FCCOL members, both of whom have served the church with distinction over many years. Their names will be announced and approved at the Annual Meeting.

I'd like to recognize our outgoing Deacons, whose terms are expiring, for their dedicated service and contributions: Julie Kuja, Jen Hall and Lucia Kelsey. We welcome new Deacons in 2015 and we look forwards to their contributions. As we go into the next year, the Deacons expect to continue our work with Steve as he builds on a very successful start in his ministry among us. We look forwards to supporting Chris as he builds on our already strong programs in youth and adult education. We are very thankful for the many members of FCCOL who volunteer in countless ways and make our church the special place that it is. Their generous gifts of time, talents and resources make the Deacons job easier and we appreciate their help with floral arrangements, ushering, food for fellowship hours, and other events.

Special thanks go to our dedicated sexton, Mark Testori, and to our Church Administrator, Bob McCracken, for their tireless efforts.

Respectfully submitted,
Daniel Renn
Chair, Board of Deacons

A REPORT ON THE TREE OF LIFE EDUCATIONAL FUND FOR 2014

In each of the programs for our Tree of Life Series this Fall I offered a reminder of the wisdom of Archimedes, the ancient Greek mathematician, “Give me a lever and I can move the world.” A door hinge is a type of lever, and it doesn’t take too much observation to see that the world has become terribly “unhinged”. This year has seen an escalation of violence throughout the world and especially the Middle East. This summer in Gaza over 2500 were killed, with 500 of those being children. This then led to the theme for our round of conferences, **“What Will Become of Our Children? Voices of Hope for a World Free of Prejudice and Hatred.”**

With over 14 different venues in churches, universities, and union halls we were able to amplify the voices of our visiting Israeli and Palestinian voices of conscience – Ivan Karakashian of Defence for Children International – Palestine Branch, Sahar Vardi of American Friends Service Committee in Jerusalem, Danielle Yaor of Shministim, Uri Gopher of the Hagar School, Barbara Lubin of Middle East Children’s Alliance, Daoud Nasser of Tent of Nations, and Mark Braverman of Kairos USA. Also, through their music, Tamer Al Sahouri, Nadine Shomali and Alber Basil – Palestinians from the West Bank community of Beit Sahour -- exemplified the meaning of the words found on the apartheid wall in Bethlehem, “To Exist Is To Resist.” Refusing to be defeated by the harsh realities of occupation, through their music they exemplified the dignity of the human spirit and its capacity for resilience. I’m most grateful to Jiries Atrash, our volunteer Tree of Life Coordinator for Israel and Palestine for without his leadership, energy and devotion, our efforts would be greatly diminished.

In addition to these, this year we also hosted Jeff Halper of Israeli Committee Against House Demolitions, representatives of Breaking the Silence, and we also heard from Harvey Cox of Harvard University, Omar Barghouti, founder of the Boycott, Divestment and Sanction movement, and in Cambridge, Massachusetts and Portland, Maine, participants were honored to hear from Dr. Mads Gilbert who has offered distinguished medical care for those who have suffered in Gaza. Also, we were honored to work in partnership with Ashley Malloy in helping to bring her very moving portrayal of Rachel Corrie in a production of “My Name Is Rachel Corrie” to the University of Chicago.

Henry David Thoreau said, “You have built your castle in the air; that is where it should be. Now build your foundation underneath.” Those words of wisdom apply to our efforts this year to strengthen the organizational structure of Tree of Life Educational Fund. We were most grateful to welcome 3 additional new members to our Board of Directors, Mike Winterfield who chairs our newly established “Advocacy Committee”, Elaine Brouillard who chairs our “Finance Committee” and Steve Jungkeit, the Senior Minister of The First Congregational Church of Old Lyme. We also established a “Legal Committee”, chaired by John Fussell, to make sure what we do is in full compliance with our non-profit status.

Also, as Tree of Life Educational Fund continues to grow and reach new communities, it’s become increasingly clear of our need for additional administrative help and support, and I’ve been most grateful for the support of our Board of Directors in the establishment of a new

(continued)

position and the part-time employment of Dr. Erinn Staley to help with this ministry. During

the New Year, Erinn will focus most of her attention on the creation and implementation of a Development Plan to provide a broad base of support for our work.

Tree of Life Educational Fund is an outgrowth of the ministry of The First Congregational Church of Old Lyme, and this year we were most grateful for the prophetic leadership of The Rev. Dr. Steven Jungkeit and the Board of Deacons that initiated a Boycott, Divestment and Sanctions Resolution that was passed by a 2/3 majority of the Connecticut Conference of the UCC. A variation on this resolution will be presented to the General Synod of the United Church of Christ at their meeting in the summer of 2015.

In 2014 we were most grateful for the initiative of John Fussell who together with others constructed our “Petition for a Just Peace in Israel/Palestine.” With a growing number of signatures we hope that this will demonstrate a broad base of support, and it’s also proven to be an excellent instrument for education. Please do all that you can to encourage others to sign this petition!

Wherever we can, we endeavor to work in partnership with other organizations engaged on this issue, and in 2014, we were proud to be in partnership with Friends of Sabeel – North America and Kairos USA. Also the newly established chapter of Jewish Voice for Peace in New Haven has given us a great partner in our efforts. We were also proud to stand in support of The Rev. Bruce Shipman who amid considerable intimidation resigned from his position as the Priest-In-Charge of the Episcopal Church at Yale. We were very proud to stand in support of his courageous advocacy for human rights and his public statements in opposition to the illegal Israeli occupation of Palestine

This year in March in our annual Tree of Life Journey we had 41 participants, including 7 seminarians from Yale and Harvard Divinity Schools. Also, in addition to that journey, in October we were most grateful for the leadership of Nancy Boldt McLaren and Erinn Staley who led a Tree of Life Journey that focused on the theme of “Eco-Resistance” and witnessed the devastating impact the occupation and the expansion of the settlements and militarization have upon Palestinian farmers and the land itself.

In addition to our journeys and series of conferences, we also had the honor of working in partnership with violinist Michael Dabroski who through his music and the world premier of his “Suite for Gaza” not only gave us an opportunity to raise funds (over \$25,000) for the medical relief so sorely needed in Gaza but also through the gift of his music he touched our hearts and reminded us that we also need to be a part of the hinge on the door that leads to a better future for us all, that we ourselves need to be the answer to that question, “What will become of our children?”

The good news is that a little bit of leverage can make a world of difference. A small hinge can turn a mighty big door, and I’m so very grateful to the over 2500 who came to our conferences, programs and concerts this year or took part in our journeys, and I’m especially grateful to our volunteer Tree of Life coordinators, all the many volunteers and generous sponsors who have strengthened and expanded the work of our Tree of Life Educational Fund. The door to a better future for our children is still closed, but with a little more leverage from us all, I am confident that we have what it takes to open that door! Please do all that you can to help us with this work!

With hope and with prayers of thanksgiving, David

David W. Good, Chairperson (volunteer) for The Tree of Life Educational Fund, www.tolef.org
Minister Emeritus for The First Congregational Church of Old Lyme, www.fccol.org

Treasurer's Report 2014 Operating Results

Summary Overview

For the year 2014, total operating revenues were \$809,811, under the budgeted amount of \$817,773, a shortfall of \$7,962, or 99% of budget. Total expenses of \$813,201 were also under the budgeted amount of \$817,773 by \$4,572, or 99.4% of budget. As a result, the church ended the year with a modest deficit of (\$3,390), or just 0.4% of the 2014 budget. These operating results are Summarized on the following page, # 14. Account details are on the following pages #s 15 through 20.

Revenues

On the revenue side, Page # 15, there were some plusses and minuses. The total category of "**Pledges and Offerings**", was under budget by \$14,600, due primarily to a shortfall of \$16,669 from the top line of "Pledges Current Year" which are the payments from members and friends who made written commitments for the year. These collections of \$573,331 were 97.17% of budget, a higher percentage of budget than last year. The other categories of "Pledges and Offerings" were very close to budgeted amounts. One highlight of our congregation's generosity was the category of "Additional Current Year Contributions" over budget, which are payments over and above member's committed amounts. The category of "**Interest and Dividends**" which primarily includes the annual contribution from the church's Endowment Fund, was essentially on budget. The category of "**Other Income**" was significantly over budget by \$6,912. The building usage line, while experiencing lower contributions from fewer weddings this year, was offset by special contributions from the Musical Masterworks organization. It was also augmented by crediting \$5,922 on the miscellaneous line from the Benevolence Escrow account on the balance sheet, so that we could maintain total benevolence giving at the historic \$90,000 level.

Expenses

On the expense side, Page #s 16-20, the categories of Ministers, Christian Education, and Church Office were slightly under budget. In Christian Ed, lower expenses for the Pilgrim Fellowships were due to more volunteer participation, and Adult Ed lower due to lower than expected honoraria payments, offset by higher Sunday School expenditures mainly for curriculum materials. The Music Program was on budget, helped by an additional contribution from the Memorial Music Fund (balance sheet) to support the special Faure Requiem performance in February. The Property account was about \$5,000 (3%) over budget due mainly to higher than budgeted heating expenses. (The Repairs, Major Maintenance and Parsonage Maintenance accounts, combined, were on budget). The Deacons account was slightly over budget due to several special events hosted during the year, offset by lower than budgeted expenses for the Essex Meadows bus. The Other Expenses account was slightly over budget due to higher than budgeted Workers Compensation premiums. Note that this account includes the \$32,500 annual loan repayment for the 2012 roof/HVAC replacement. This was payment #2 of 10. Lastly, our financial situation did permit us to maintain the \$90,000 Benevolence giving level of past years.

Year-End Deficit Accounting

The \$3,390 deficit amount will be entered on the balance sheet as a negative entry to the accumulated surplus account.

Remainder of the Treasurer's Report

Account-by-account detail for the 2014 operating results is found on page #s 15 through 20. Following these pages are (1) the December 31st 2014 Balance Sheet, (2) Details of the Escrow Funds on the Balance Sheet, and (3) the Statement of Sources and Uses of Funds for 2014. Total Benevolence giving is shown on the bottom of the Escrow Funds page.

Respectfully submitted, Robert McCracken, Treasurer

First Congregational Church of Old Lyme			
Treasurer's Report for the Year 2014			
Analysis of Revenues and Expenses			
	SUMMARY		
	Actual	Budget	% Budget
REVENUES			
CONTRIBUTIONS			
PLEDGES & OFFERINGS	\$665,250.20	\$679,850.00	97.85 %
INTEREST & DIVIDENDS	\$111,174.35	\$111,448.00	99.75 %
OTHER INCOME	\$33,386.78	\$26,474.50	126.11 %
Total CONTRIBUTIONS	\$809,811.33	\$817,772.50	99.03 %
Total REVENUES	\$809,811.33	\$817,772.50	99.03 %
EXPENSES			
MINISTERS			
SENIOR MINISTER	\$90,271.72	\$92,239.45	97.87 %
ASSOCIATE MINISTER-CRG	\$97,986.08	\$98,590.52	99.39 %
ASSOCIATE MINISTER-RTC	\$51,494.68	\$74,290.58	69.32 %
ASSOCIATE MINISTER-CDS	\$22,788.80	\$0.00	0.00 %
CHAPEL & LAY MINISTERS	\$8,094.43	\$10,300.00	78.59 %
MIN OF VISITATION-EMF	\$0.00	\$0.00	0.00 %
Total MINISTERS	\$270,635.71	\$275,420.55	98.26 %
CHRISTIAN EDUCATION			
SUNDAY SCHOOL	\$17,331.63	\$14,494.00	119.58 %
CONFIRMATION	\$66.47	\$500.00	13.29 %
JUNIOR PF	\$3,635.69	\$4,500.00	80.79 %
SENIOR PF	\$614.87	\$4,700.00	13.08 %
ADULT EDUCATION	\$220.82	\$1,500.00	14.72 %
Total CHRISTIAN EDUCATION	\$21,869.48	\$25,694.00	85.12 %
MUSIC	\$46,888.91	\$46,781.00	100.23 %
CHURCH OFFICE	\$35,953.12	\$37,550.00	95.75 %
PROPERTY	\$150,087.25	\$145,665.00	103.04 %
DEACONS	\$5,653.15	\$5,400.00	104.69 %
LAY EMPLOYEES	\$136,968.72	\$136,874.00	100.07 %
BENEVOLENCES			
UCC	\$18,000.00	\$18,000.00	100.00 %
MISSION EDUCATION FUND	\$14,318.05	\$14,700.00	97.40 %
DIRECT PARTNER SUPPORT	\$6,500.00	\$6,634.00	97.97 %
PARTNERSHIP COMMITTEES	\$1,048.99	\$900.00	116.55 %
LOCAL OUTREACH	\$50,132.96	\$49,766.00	106.10 %
Total BENEVOLENCES	\$90,000.00	\$90,000.00	100.00 %
OTHER EXPENSES	\$55,145.00	\$54,387.95	101.39 %
Total EXPENSES	\$813,201.34	\$817,772.50	99.44 %
2014 Surplus/(Deficit)	(\$3,390.01)	\$0.00	0.00 %

First Congregational Church of Old Lyme
Treasurer's Report for the Year 2014
Analysis of Revenues and Expenses
DETAIL Page 1 of 6

	2014		
	Actual	Budget	% Budget
REVENUES			
PLEDGES & OFFERINGS			
040000 - PLEDGES-CURRENT YEAR	\$573,330.76	\$590,000.00	97.17 %
040001 - PLEDGES -PRIOR YEAR	\$5,494.00	\$5,000.00	109.88 %
040002 - OPEN PLATE	\$21,117.64	\$20,000.00	105.59 %
040003 - ADDITIONAL CURRENT YR CONTRIBS	\$17,051.69	\$15,000.00	113.68 %
040004 - MEMB NON-PLEDGE CONTRIBS	\$17,876.67	\$20,000.00	89.38 %
040005 - CHURCH SCHOOL PLATE	\$29.44	\$50.00	58.88 %
040007 - LADIES BENEVOLENT SOCIETY	\$20,000.00	\$20,000.00	100.00 %
040008 - SOUTH LYME CHAPEL	\$10,350.00	\$9,800.00	105.61 %
Total PLEDGES & OFFERINGS	\$665,250.20	\$679,850.00	97.85 %
INTEREST & DIVIDENDS			
040100 - INTEREST & DIVIDENDS	\$2,226.35	\$2,500.00	89.05 %
040101 - ENDOWMENT	\$108,948.00	\$108,948.00	100.00 %
Total INTEREST & DIVIDENDS	\$111,174.35	\$111,448.00	99.75 %
OTHER INCOME			
040201 - BUILDING USAGE	\$20,990.00	\$20,000.00	104.95 %
040202 - MISC.	\$5,922.28	\$0.00	0.00 %
040203 - CARRYOVER FROM PRIOR YEAR	\$6,474.50	\$6,474.50	100.00 %
040204 - TRANS. FROM CONTING. FUND	\$0.00	\$0.00	0.00 %
Total OTHER INCOME	\$33,386.78	\$26,474.50	126.11 %
Total REVENUES	\$809,811.33	\$817,772.50	99.03 %

First Congregational Church of Old Lyme			
Treasurer's Report for the Year 2014			
Analysis of Revenues and Expenses			
DETAIL - Page 2 of 6			
	2014		
	Actual	Budget	% Budget
EXPENSES - MINISTERS			
SENIOR MINISTER			
050000 - SALARY-SRJ	\$57,024.96	\$55,825.00	102.15 %
050001 - HEALTH & LIFE INS-SRJ	\$19,822.14	\$18,997.08	104.34 %
050002 - ANNUITY-PCUSA-SRJ	\$9,086.46	\$9,911.47	91.68 %
050003 - AUTO ALLOWANCE-SRJ	\$1,491.04	\$3,000.00	49.70 %
050004 - HOUSING ALLOWANCE-SRJ	\$0.00	\$0.00	0.00 %
050005 - SOCIAL SECURITY ALLOW-SRJ	\$7,710.00	\$7,710.00	100.00 %
050007 - HEALTH INS CONTRIB-SRJ	(\$4,862.88)	(\$4,404.10)	0.00 %
050008 - PHONE & COMPUTER	\$0.00	\$1,200.00	0.00 %
Total SENIOR MINISTER	\$90,271.72	\$92,239.45	97.87 %
ASSOCIATE MINISTER-CRG			
050200 - SALARY-CRG	\$50,247.72	\$53,791.00	93.41 %
050201 - HEALTH & LIFE INS-CRG	\$5,020.99	\$5,289.00	94.93 %
050202 - ANNUITY CONTRIB-FCCOL-CRG	\$7,662.48	\$10,166.52	75.37 %
050203 - AUTO ALLOWANCE-CRG	\$5,161.52	\$3,000.00	172.05 %
050204 - HOUSING ALLOWANCE-CRG	\$22,370.28	\$18,827.00	118.82 %
050205 - SOCIAL SEC ALLOW-CRG	\$7,517.04	\$7,517.00	100.00 %
050206 - ANNUITY CONTRIB-UCC-CRG	\$7.25	\$0.00	0.00 %
050207 - ANNUITY CONTRIB-Essex-CRG	(\$1.20)	\$0.00	0.00 %
Total ASSOCIATE MINISTER-CRG	\$97,986.08	\$98,590.52	99.39 %
ASSOCIATE MINISTER-RTC			
050500 - SALARY-RTC	\$29,012.63	\$40,959.00	70.83 %
050501 - HEALTH & LIFE INS-RTC	\$3,576.99	\$4,999.00	71.55 %
050502 - ANNUITY CONTRIB-FCCOL-RTC	\$5,618.50	\$7,454.58	75.37 %
050503 - AUTO ALLOWANCE-RTC	\$623.00	\$3,000.00	20.77 %
050504 - HOUSING ALLOWANCE-RTC	\$8,704.00	\$12,288.00	70.83 %
050505 - SOCIAL SEC ALLOW-RTC	\$3,959.56	\$5,590.00	70.83 %
Total ASSOCIATE MINISTER-RTC	\$51,494.68	\$74,290.58	69.32 %
ASSOCIATE MINISTER-CDS			
050100 - SALARY-CDS	\$14,673.02	\$0.00	0.00 %
050101 - HEALTH & LIFE INS-CDS	\$1,575.00	\$0.00	0.00 %
050102 - ANNUITY CONTRIB-FCCOL-CDS	\$0.00	\$0.00	0.00 %
050103 - AUTO ALLOWANCE-CDS	\$205.36	\$0.00	0.00 %
050105 - SOCIAL SEC ALLOW-CDS	\$1,933.52	\$0.00	0.00 %
050106 - HOUSING ALLOWANCE-CDS	\$4,401.90	\$0.00	0.00 %
Total ASSOCIATE MINISTER-CDS	\$22,788.80	\$0.00	0.00 %
CHAPEL & LAY MINISTERS			
050300 - CHAPEL MINISTER	\$7,175.00	\$7,800.00	91.99 %
050301 - SEMINARS & MISC.	\$919.43	\$2,500.00	36.78 %
050302 - SEMINARIAN	\$0.00	\$0.00	0.00 %
Total CHAPEL & LAY MINISTERS	\$8,094.43	\$10,300.00	78.59 %
Total MINISTERS	\$270,635.71	\$275,420.55	98.26 %

First Congregational Church of Old Lyme			
Treasurer's Report for the Year 2014			
Analysis of Revenues and Expenses			
DETAIL - Page 3 of 6			
	2014		
	Actual	Budget	% Budget
CHRISTIAN EDUCATION			
SUNDAY SCHOOL			
051000 - CHURCH SCHOOL ASSISTANT	\$12,578.95	\$11,994.00	104.88 %
051001 - PROGRAMS	\$2,892.22	\$3,000.00	96.41 %
051002 - SUPPLIES/CE	\$4,458.28	\$2,500.00	178.33 %
051003 - CURRICULUM	\$642.18	\$0.00	0.00 %
051005 - CHILD CARE	\$760.00	\$1,000.00	76.00 %
051006 - TRANSFER FR YOUTH ED FUND	(\$4,000.00)	(\$4,000.00)	0.00 %
Total SUNDAY SCHOOL	\$17,331.63	\$14,494.00	119.58 %
CONFIRMATION			
051102 - CONFIRMATION PROGRAM	\$66.47	\$500.00	13.29 %
Total CONFIRMATION	\$66.47	\$500.00	13.29 %
JUNIOR PF			
051101 - JR PF PROGRAMS	\$935.69	\$500.00	187.14 %
051103 - JUNIOR PF LEADERS	\$2,700.00	\$4,000.00	67.50 %
Total JUNIOR PF	\$3,635.69	\$4,500.00	80.79 %
SENIOR PF			
051200 - PF PROGRAMS	\$270.20	\$200.00	135.10 %
051201 - PF SUPPLIES	\$344.67	\$500.00	68.93 %
051203 - SR. PF LEADERS	\$0.00	\$4,000.00	0.00 %
Total SENIOR PF	\$614.87	\$4,700.00	13.08 %
ADULT EDUCATION			
051300 - ADULT ED PROGRAMS	\$220.82	\$250.00	88.33 %
051301 - ADULT ED SUPPLIES	\$0.00	\$750.00	0.00 %
051303 - ADULT ED HONORARIUM	\$0.00	\$500.00	0.00 %
Total ADULT EDUCATION	\$220.82	\$1,500.00	14.72 %
Total CHRISTIAN EDUCATION	\$21,869.48	\$25,694.00	85.12 %
MUSIC			
052001 - MUSIC DIRECTOR	\$27,068.50	\$27,000.00	100.25 %
052002 - MUSIC SUPPLIES	\$1,601.82	\$1,000.00	160.18 %
052003 - MUSIC PROGRAM	\$6,137.62	\$2,000.00	306.88 %
052004 - ORGANIST SUBSTITUTE	\$1,950.00	\$3,000.00	65.00 %
052005 - CONTINUING EDUCATION	\$0.00	\$200.00	0.00 %
052006 - MAINTENANCE/MUSIC	\$1,500.00	\$1,750.00	85.71 %
052007 - MAJOR ORGAN REPAIR	\$0.00	\$0.00	0.00 %
052010 - ALL AGE CHOIR DIRECTOR	\$6,831.00	\$6,831.00	100.00 %
052011 - PROF SOLOIST-TENOR	\$5,999.94	\$6,000.00	100.00 %
052012 - SECT LDR-SOPRANO	\$5,333.36	\$6,000.00	88.89 %
052013 - CHILDREN'S CHOIR DIRECTOR	\$1,466.67	\$0.00	0.00 %
052014 - MEDICAL PREMIUMS	\$0.00	\$0.00	0.00 %
052015 - FROM MEM MUSIC FUND	(\$11,000.00)	(\$7,000.00)	0.00 %
Total MUSIC	\$46,888.91	\$46,781.00	100.23 %
CHURCH OFFICE			
053002 - WEBSITE ADMINISTRATION	\$794.09	\$500.00	158.82 %
053006 - TELEPHONE	\$5,348.54	\$4,800.00	111.43 %
053007 - OFFICE SUPPLIES	\$9,446.16	\$9,500.00	99.43 %
053009 - POSTAGE	\$6,182.07	\$7,000.00	88.32 %
053010 - EQUIPMENT	\$250.97	\$750.00	33.46 %
053011 - SERVICE& LEASE CONTRACTS	\$10,591.90	\$12,000.00	88.27 %
053013 - SOFTWARE SUPPORT	\$3,339.39	\$3,000.00	111.31 %
Total CHURCH OFFICE	\$35,953.12	\$37,550.00	95.75 %

First Congregational Church of Old Lyme			
Treasurer's Report for the Year 2014			
Analysis of Revenues and Expenses			
DETAIL - Page 4 of 6			
2014			
	Actual	Budget	% Budget
PROPERTY			
054002 - PROPANE	\$1,459.51	\$1,200.00	121.63 %
054003 - HEAT	\$33,005.70	\$27,000.00	122.24 %
054004 - ELECTRICITY	\$17,926.60	\$18,000.00	99.59 %
054005 - REPAIRS & MAINTENANCE	\$17,475.22	\$10,000.00	174.75 %
054006 - PROPERTY SUPPLIES	\$3,989.19	\$4,000.00	99.73 %
054007 - INSURANCE-CHURCH	\$39,970.00	\$41,465.00	96.39 %
054008 - CLEANING SERVICES	\$11,407.37	\$12,000.00	95.06 %
054009 - SERVICE CONTRACTS	\$7,610.00	\$7,000.00	108.71 %
054010 - MAJOR MAINTENANCE	\$15,173.66	\$20,000.00	75.87 %
054011 - TO/FROM MAJ MAINT ESCROW	\$0.00	\$0.00	0.00 %
054012 - PARSONAGE MAINTENANCE	\$2,070.00	\$5,000.00	41.40 %
Total PROPERTY	\$150,087.25	\$145,665.00	103.04 %
DEACONS			
055000 - DEACONS FLOWERS	\$210.00	\$500.00	42.00 %
055001 - DEACONS SUPPLIES	\$3,012.78	\$600.00	502.13 %
055002 - DEACONS COMMUNION	\$155.30	\$200.00	77.65 %
055004 - DEACONS GIFTS	\$0.00	\$100.00	0.00 %
055005 - DEACONS TRANSPORTATION	\$2,016.50	\$3,500.00	57.61 %
055006 - DEACONS NEW MEMBER'S FTNS	\$258.57	\$500.00	51.71 %
Total DEACONS	\$5,653.15	\$5,400.00	104.69 %
LAY EMPLOYEES			
056003 - SECRETARY	\$46,515.76	\$44,443.00	104.66 %
056004 - SECRETARY/PART TIME	\$605.00	\$750.00	80.67 %
056005 - BOOKKEEPER	\$15,493.50	\$17,160.00	90.29 %
056006 - SEXTON	\$38,999.97	\$34,539.00	112.92 %
056007 - ASST SEXTON	\$243.75	\$500.00	48.75 %
056008 - HEALTH & LIFE INS	\$12,010.87	\$15,113.00	79.47 %
056009 - ANNUITIES	\$3,569.87	\$4,739.00	75.33 %
056011 - HEALTH INS CONTRIB	\$0.00	\$0.00	0.00 %
056013 - TRAVEL REIMBURSEMENT	\$0.00	\$100.00	0.00 %
056015 - CHURCH ADMINISTRATOR	\$19,530.00	\$19,530.00	100.00 %
056016 - ADMINISTRATIVE ASSISTANT	\$0.00	\$0.00	0.00 %
Total LAY EMPLOYEES	\$136,968.72	\$136,874.00	100.07 %

First Congregational Church of Old Lyme			
Treasurer's Report for the Year 2014			
Analysis of Revenues and Expenses			
DETAIL - Page 5 of 6			
2014			
	Actual	Budget	% Budget
BENEVOLENCES			
058000 - UCC SUPPORT	\$18,000.00	\$18,000.00	100.00 %
MISSION EDUCATION FUND			
058100 - STOREFRONT SCHOOL-HARLEM	\$0.00	\$0.00	0.00 %
058101 - GREEN GRASS CHURCH	\$3,000.00	\$3,000.00	100.00 %
058102 - SOUTH AFRICAN JOURNEYS	\$2,618.39	\$3,000.00	87.28 %
058104 - ISRAEL/PALESTINE	\$3,999.66	\$4,000.00	99.99 %
058105 - NCC COALITION ENVIRONMENT	\$0.00	\$0.00	0.00 %
058106 - KOINONIA TRAVEL	\$0.00	\$0.00	0.00 %
058107 - MORNINGSTAR CAMP	\$2,200.00	\$2,200.00	100.00 %
058108 - HAITI SCHOLARSHIPS	\$2,500.00	\$2,500.00	100.00 %
Total MISSION EDUCATION FUND	\$14,318.05	\$14,700.00	97.40 %
DIRECT PARTNER SUPPORT			
058200 - STOREFRONT-HARLEM	\$2,500.00	\$2,500.00	100.00 %
058201 - STOREFRONT CAMP	\$0.00	\$0.00	0.00 %
058202 - PLOWSHARES	\$1,000.00	\$1,000.00	100.00 %
058207 - TSHWARAGANO	\$0.00	\$0.00	0.00 %
058208 - ISRAEL/PALESTINE	\$3,000.00	\$3,000.00	100.00 %
058209 - RAY OF HOPE (CMM)	\$0.00	\$0.00	0.00 %
058210 - GREEN GRASS	\$0.00	\$134.40	0.00 %
058211 - ALBERT STREET SCHOOL	\$0.00	\$0.00	0.00 %
Total DIRECT PARTNER SUPPORT	\$6,500.00	\$6,634.40	97.97 %
PARTNERSHIP COMMITTEES			
058300 - STOREFRONT SCHOOL	\$0.00	\$0.00	0.00 %
058301 - GREEN GRASS	\$209.90	\$300.00	69.97 %
058302 - SOUTH AFRICA	\$539.09	\$300.00	179.70 %
058303 - ISRAEL/PALESTINE	\$300.00	\$300.00	100.00 %
Total PARTNERSHIP COMMITTEES	\$1,048.99	\$900.00	116.55 %
LOCAL OUTREACH			
058401 - COMMITTEE OF ENVIRONMENT	\$1,491.40	\$1,500.00	99.43 %
058403 - MISSION SAVINGS FUND	\$9,381.31	\$9,515.60	104.24 %
058404 - DONATION TO MIN DISC FUND	\$0.00	\$0.00	0.00 %
058406 - HOSP-CHAPLANCIES-L&M	\$250.00	\$250.00	100.00 %
058407 - HOSP CHAPLANCIES MDLX	\$250.00	\$250.00	100.00 %
058408 - HABITAT FOR HUMANITY	\$2,000.00	\$2,000.00	100.00 %
058411 - SAFE FUTURES	\$2,000.00	\$2,000.00	100.00 %
058413 - SHORELINE SOUP KITCHEN	\$0.00	\$0.00	0.00 %
058414 - HEALTH & WELFARE COMM.	\$2,000.00	\$2,000.00	100.00 %
058415 - NEW LONDON SOUP KITCHEN	\$2,010.25	\$2,500.00	80.41 %
058417 - THAMES RIVER FAMILY PROG	\$1,000.00	\$1,000.00	100.00 %
058418 - MARTIN HOUSE	\$1,000.00	\$1,000.00	100.00 %
058419 - ALLIANCE FOR LIVING	\$1,000.00	\$1,000.00	100.00 %
058421 - COVENANT SHELTER	\$2,000.00	\$2,000.00	100.00 %
058422 - IRC/NEW YORK	\$750.00	\$750.00	100.00 %
058424 - THE COALITION	\$500.00	\$500.00	100.00 %
058425 - MIDNIGHT RUN	\$250.00	\$250.00	100.00 %

First Congregational Church of Old Lyme			
Treasurer's Report for the Year 2014			
Analysis of Revenues and Expenses			
DETAIL - Page 6 of 6			
2014			
Benevolences - Local Outreach - continued	Actual	Budget	% Budget
058426 - CROSBY FUND FOR HATIAN ED	\$3,500.00	\$3,500.00	100.00 %
058427 - BRIDGES OF HOPE	\$3,000.00	\$3,000.00	100.00 %
058428 - FRESH NEW LONDON	\$2,000.00	\$2,000.00	100.00 %
058429 - ENGENDER HEALTH	\$0.00	\$0.00	0.00 %
058430 - FINCA INTERNATIONAL	\$0.00	\$0.00	0.00 %
058431 - HOMELESS HOSPITALITY CENTER	\$4,000.00	\$4,000.00	100.00 %
058433 - A SACRED PLACE	\$1,000.00	\$1,000.00	0.00 %
058435 - CAMP CLAIRE	\$0.00	\$0.00	0.00 %
058437 - CARTER CENTER	\$0.00	\$0.00	0.00 %
058438 - INDIA MICRO CREDIT	\$750.00	\$750.00	100.00 %
058442 - CAIR	\$1,000.00	\$1,000.00	100.00 %
058443 - LITERACY VOLUNTEERS OF E CT	\$0.00	\$0.00	0.00 %
058444 - CT COALITION TO END	\$500.00	\$500.00	100.00 %
058445 - COMMUNITY WATER SOLUTIONS	\$0.00	\$0.00	0.00 %
058447 - LITERACY VOLS VALLEY SHORE	\$500.00	\$500.00	100.00 %
058448 - MID EAST CHILDREN'S ALLIANCE	\$3,000.00	\$2,000.00	150.00 %
058449 - SIMPLY SMILES	\$1,000.00	\$1,000.00	100.00 %
058450 - EVERY DOLLAR FEEDS KIDS	\$1,500.00	\$1,500.00	100.00 %
058451 - SOLAR PROJECTS	\$0.00	\$0.00	0.00 %
058452 - IINTEG REFUGEE &IMIGRANT SVCS	\$1,500.00	\$1,500.00	100.00 %
058453 - HOMELESS HOSP SAT. DINNERS	\$1,000.00	\$1,000.00	0.00 %
Total LOCAL OUTREACH	\$50,132.96	\$49,765.60	106.10 %
Total BENEVOLENCES	\$90,000.00	\$90,000.00	100.00 %
OTHER EXPENSES			
059000 - PAYROLL TAX	\$11,984.12	\$12,137.95	98.73 %
059001 - WORKER'S COMP	\$5,828.50	\$5,000.00	116.57 %
059002 - SABBATICAL SUPPORT	\$0.00	\$0.00	0.00 %
059003 - LOAN REPAYMENT	\$32,500.00	\$32,500.00	100.00 %
059005 - STOCK GAIN/LOSS	(\$279.36)	\$0.00	0.00 %
059007 - MISC./O.E.	\$978.00	\$1,000.00	97.80 %
059009 - CHURCH AUDIT	\$0.00	\$0.00	0.00 %
059010 - STOCK EXCHANGE FEES	\$247.53	\$750.00	33.00 %
059011 - TRANS TO CONTINGENCY	\$0.00	\$0.00	0.00 %
059012 - TRANS TO ESCROWS	\$0.00	\$0.00	0.00 %
059013 - STEWARDSHIP CAMPAIGNS	\$3,886.21	\$3,000.00	129.54 %
Total OTHER EXPENSES	\$55,145.00	\$54,387.95	101.39 %
Total EXPENSES	\$813,201.34	\$817,772.50	99.44 %
Surplus/(Deficit)	(\$3,390.01)	\$0.00	0.00 %

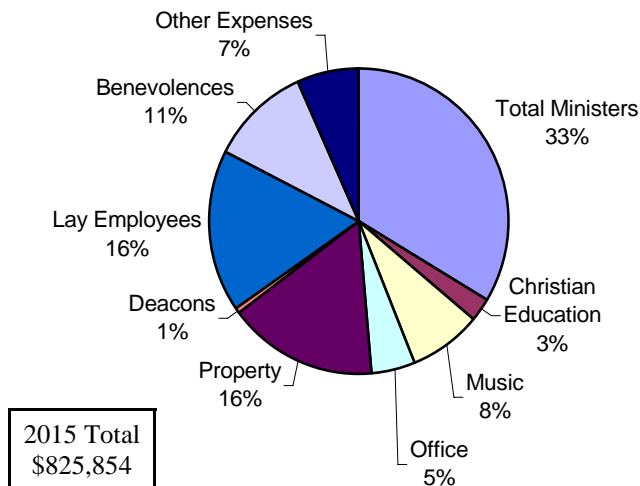
First Congregational Church of Old Lyme				
Treasurer's Report for the Year 2014				
Balance Sheet Detail - ESCROWED FUNDS as of December 31st, 2014				
	Beginning	Restricted	Restricted	Ending
	Balance	Revenue	Expenses	Balance
Total Short Term EXCHANGE ACCOUNTS	\$270,897.97	\$470,595.45	\$428,374.81	\$313,118.61
ESCROW FUNDS				
080100 - MEMORIAL FUND	\$13,888.32	\$1.25	\$5,141.68	\$8,747.89
080101 - RESERVE CONTINGENCY	\$48,044.30	\$20,697.52	\$16,619.98	\$52,121.84
080103 - HABITAT PROJECT	\$1.24	\$0.00	\$0.00	\$1.24
080105 - MEMORIAL MUSIC FUND	\$12,992.94	\$1.26	\$0.00	\$12,994.20
080106 - SOUTH LYME CHAPEL FUND	\$3,031.03	\$0.28	\$0.00	\$3,031.31
080107 - CAMP FUND	\$0.13	\$0.53	\$0.00	\$0.66
080109 - ORGAN MAINTENANCE FUND	\$16,549.64	\$1.61	\$0.00	\$16,551.25
080110 - MAJOR MAINTENCE ESCROW	(\$12,191.81)	\$17,302.43	\$10,880.52	(\$5,769.90)
080111 - CAPITAL EQUIP/LAND FUND	\$3,488.20	\$0.12	\$3,248.61	\$239.71
080112 - CHILDRENS CHOIR FUND	\$5.73	\$0.00	\$0.00	\$5.73
080113 - MEMORIAL GARDEN FUND 2	\$879.88	\$0.12	\$0.00	\$880.00
080114 - PARSONAGE FUND	\$34.49	\$6,000.10	\$7,728.64	(\$1,694.05)
080115 - ANONYMOUS NUM I	\$19,411.05	\$1.89	\$0.00	\$19,412.94
080116 - KOINONIA	\$2,193.63	\$0.24	\$0.00	\$2,193.87
080117 - OFFICE CAPITAL	\$85.69	\$0.00	\$0.00	\$85.69
080118 - CHRISTIAN ED ESCROW	\$5,831.45	\$0.50	\$4,890.82	\$941.13
080119 - BENEVOLENCE ESCROW	\$17,942.71	\$1.73	\$5,881.31	\$12,063.13
080120 - SABBATICAL SUPPORT	\$11,152.51	\$1.10	\$0.00	\$11,153.61
080121 - AFFORDABLE HOUSING	\$7.69	\$0.00	\$0.00	\$7.69
080122 - AUDIT RESERVE	\$2,676.31	\$0.23	\$0.00	\$2,676.54
Total ESCROW FUNDS	\$146,025.13	\$44,010.91	\$54,391.56	\$135,644.48
Total TEMPORARY RESTRICTED	\$416,923.10	\$514,606.36	\$482,766.37	\$448,763.09
2014 Total Benevolence Giving by FCCOL Members and Friends				
Benevolence Contributions from the Operating Budget		\$90,000		
Contributions to FCCOL Solar Installation Project		\$73,000		
Ladies Benevolent Society - WES Disbursements		\$70,000		
Minister's Discretionary Fund Disbursements		\$40,000		
One Great Hour of Sharing		\$10,338		
Contributions to Crosby Fund for Haitian Education		\$7,840		
Contributions to Food Pantry		\$5,520		
Anonymous Gift to Minister's Discretionary Fund		\$5,000		
Special contribs to Albert Street School, South Africa		\$2,000		
Crop Walk and UNICEF		\$500		
TOTAL		\$304,198		

First Congregational Church of Old Lyme						
Treasurer's Report for the Year 2014						
Sources and Uses of Funds						
CURRENT ASSETS						Balances
	010000 - CHECKING /OP				\$120,728.40	
	010002 - PETTY CASH				\$340.00	
	010003 - SMITH BARNEY/ESCROW ACCT				\$145,912.03	
	010004 - SMITH BARNEY/GIFT ACCOUNT				\$139,931.01	
Total Beginning Balance as of January 1, 2014						\$406,911.44
PLEDGES & OFFERINGS			Sources of Funds			
	040000 - PLEDGES-CURRENT YEAR				\$573,330.76	
	040001 - PLEDGES -PRIOR YEAR				\$5,494.00	
	040002 - OPEN PLATE				\$21,117.64	
	040003 - ADDITIONAL CURRENT YR CONTRIBS				\$17,051.69	
	040004 - MEMB NON-PLEDGE CONTRIBS				\$17,876.67	
	040005 - CHURCH SCHOOL PLATE				\$29.44	
	040007 - LADIES BENEVOLENT SOCIETY				\$20,000.00	
	040008 - SOUTH LYME CHAPEL				\$10,350.00	
Total PLEDGES & OFFERINGS					\$665,250.20	
INTEREST & DIVIDENDS						
	040100 - INTEREST & DIVIDENDS				\$2,226.35	
	040101 - ENDOWMENT				\$108,948.00	
Total INTEREST & DIVIDENDS					\$111,174.35	
OTHER INCOME						
	040201 - BUILDING USAGE				\$20,990.00	
	040202 - MISC.				\$5,922.28	
	040203 - CARRYOVER FROM PRIOR YEAR				\$6,474.50	
Total OTHER INCOME					\$33,386.78	
Total OPERATING REVENUES/INCOME					\$809,811.33	
Total Withholdings					\$62,344.89	
Total Temporary Restricted Withholdings					\$514,606.36	
Total Sources of Funds					\$1,386,762.58	\$1,793,674.02
Uses of Funds						
Total MINISTERS					\$270,635.71	
Total CHRISTIAN EDUCATION					\$21,869.48	
Total MUSIC					\$46,888.91	
Total CHURCH OFFICE					\$35,953.12	
Total PROPERTY					\$150,087.25	
Total DEACONS					\$5,653.15	
Total LAY EMPLOYEES					\$136,968.72	
Total BENEVOLENCES					\$90,000.00	
Total OTHER EXPENSES					\$55,145.00	
Total Withholdings					\$56,752.28	
Total Fund Principal Withholdings					\$6,474.50	
Total Temporary Restricted Withholdings					\$482,766.37	
Total Uses of Funds					\$1,359,194.49	\$434,479.53
Balances On Hand						
CURRENT ASSETS						
	010000 - CHECKING /OP				\$226,350.27	
	010002 - PETTY CASH				\$340.00	
	010003 - SMITH BARNEY/ESCROW ACCT				\$127,385.38	
	010004 - SMITH BARNEY/GIFT ACCOUNT				\$80,403.88	
Total Balances on Hand - As of December 31st, 2014						\$434,479.53

A NEW WAY TO LOOK AT OUR CHURCH'S BUDGET

Our church's budget is much more than a series of accounting line items that show in excruciating detail where every cent comes from and goes. This type of presentation is important and necessary for the responsible accounting of our finances on a daily basis. However, this view sheds no light on who we REALLY are as a church and how we are going about the Lord's work. Detailing, for example, how much we spend on propane, or paint, or housing allowances or payroll taxes simply does not, and cannot, tell this important story.

This is how our budget looks on a "Line Item" basis:



Some Unanswered Questions:

What do the lay employees do?

Do we ONLY spend 11% on Music and Christian Education?

How is the property used?

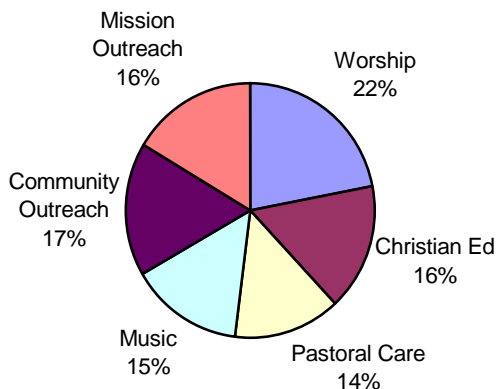
How do the Ministers spend their time?

What are the Other Expenses for?

At its core, our church's budget is really a strategic statement of our priorities, our values, our vision and how we are applying our resources for changing people's lives.

Here is how those resources are applied to the **six fundamental missions of our church**

WORSHIP, CHRISTIAN EDUCATION, PASTORAL CARE, MUSIC, COMMUNITY OUTREACH and MISSION OUTREACH



SAME \$\$ - MUCH DIFFERENT PERSPECTIVE !

A NEW WAY TO LOOK AT OUR CHURCH'S BUDGET

MISSION OUTREACH

Our Board of Missions (through the operating budget), and the Ladies Benevolent Society (through the White Elephant Sale) generously support over 75 local and international charities and missions each year. We also nurture partnerships with churches in South Africa, a Native American community in South Dakota, Koinonia Farm in Georgia, Beit Sahour in Palestine, a school in Harlem, and a foundation in Haiti.

WORSHIP

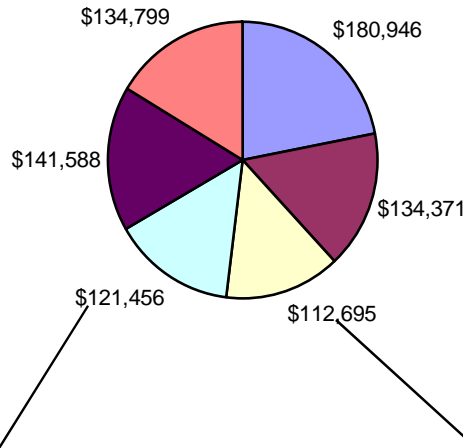
We conduct over 130 inspiring worship services every Sunday morning in our historic Meetinghouse and at the South Lyme Chapel, to which ALL are welcome. These are in addition to special services during the Christmas, Easter, Lenten and Thanksgiving seasons. Our 4 ministers deliver consistently inspiring and challenging sermons, and the services provide quality time for meditation, prayer, and the enjoyment of sacred music.

COMMUNITY OUTREACH

We are the largest site in SE Connecticut for the Shoreline Food Pantries and Soup Kitchens, distributing groceries and serving meals to at least 200 families each week. We also host the local Boy and Cub Scout Troops, Red Cross blood drives, Musical Masterworks concerts, Visiting Nurse Association activities, AA meetings, and much, much more.

CHRISTIAN EDUCATION

We have a vibrant Sunday School program called "God's Neighborhood" meeting every Sunday and featuring several "diversity Sundays" to nurture understanding of other faiths and cultures. There are active Junior and Senior High Fellowship groups, Bible study and book groups, poetry and writing groups. And the Adult Forum presentations every Sunday provide discussions of challenging issues.



MUSIC

Our extensive music programs enhance the worship services and lives of many participants: A 45+ person Senior Choir, a 25+ person All-Age Choir, the Children's choir, music sessions during "God's Neighborhood" and special concerts provide opportunities to enjoy and participate in music year-round. We are grateful for our professional Directors and Soloists for their skillful leadership of these programs.

PASTORAL CARE

Our ministers are available at all times for the pastoral care needs of our congregation and other members of the community. Visits to homes, hospitals and nursing homes, memorial services and grief counseling, pre-marriage and baptism counseling are all part of their gifts of service. Grief support, cancer support and caregiver support groups are also held when these are needed. The Minister's Discretionary Fund provides financial support to local people in need.

OUR CHURCH IS INDEED A PLACE OF GRACE

PROPOSED 2015 BUDGET OVERVIEW

Development of the 2015 budget began in the early fall of 2014. All church board and committee chairpersons, the ministers, and others responsible for the church administration and programs were asked to provide projections of their requirements for 2015. In November, the Budget Committee developed a tentative budget for review with the Trustees while awaiting the implementation of the fall stewardship campaign. As the fall progressed, the budget continued to be adjusted as new information on anticipated revenue and expenditures was received. At their January 2015 meeting, the Board of Trustees approved submitting the proposed budget to the congregation at the January 25th, 2015 Annual Congregational Meeting for a vote of approval according to the church by-laws. Highlights of the 2015 budget are as follows:

Revenues

Pledges and Offerings: Moderate increase in “Pledges Current Year” over 2014 based on guidance from the Board of Stewardship, even though the campaign is not yet complete. Other accounts are in line with history and 2014 experience.

Endowment Income: Small reduction versus 2014 due to the Endowment Fund contributing 6% of the last 3-year average fund principal, compared to a 7% contribution last year. This represents a decision by the Trustees to return to the 5% standing endowment policy in future years. Requires approval of the congregation because this amount exceeds 5% of the church budget.

Other Income: Building usage reduction based on fewer expected weddings compared to history. Miscellaneous entry is a \$10,000 contribution from the Benevolence Escrow account on the balance sheet to enable continuation of Benevolence giving at the historical \$90,000 level.

Expenses

Ministers: 2% base salary increases recommended by the Personnel Committee. Steve living in the Parsonage, Carleen and Chris receiving housing allowances. Requires approval of the congregation. Other benefits (e.g. insurance and retirement) are provided in accordance with FCCOL and UCC policies.

Christian Education: Significant reduction from 2014, but this does not reflect reduced emphasis on this important ministry. Factors are: fewer hours for new Church School Coordinator, more volunteer participation for Pilgrim Fellowship leadership, and reduced need for Adult Ed honoraria.

Music: Substantial increase from 2014. Represents much-needed investment in Music Director compensation, more special programs and renewed emphasis on the Children’s Choir.

Church Office: In line with history, primarily fixed costs.

Property: Moderate reduction versus 2014. Savings in electricity (some solar last half of 2015) and insurance premiums (favorable claim experience). Lower Major Maintenance due to budget constraints.

Deacons: Small increase for special functions, reduction in Essex Meadows bus expense with Bill Slivinski (volunteer) driving for all Sundays.

Lay Employees: Note this year that this category includes only church-wide administrative positions. Staffs that are dedicated to specific ministries are now accounted for in their respective categories, i.e. Music and Christian Education. Base salary increase of 2% recommended by Personnel Committee.

Benevolences: Reflects the desire of the Ministers and the Board of Missions to keep missions and benevolence giving at historic level. Specific beneficiaries are determined during the year by the Board of Missions as needs, circumstances and/or opportunities arise or change.

Other Expenses: Generally fixed or contractual in nature. Major elements are: Worker’s Compensation insurance, employee payroll taxes, and the Roof/HVAC loan repayment (will be payment #3 of 10).

Respectfully submitted, The Budget Committee of the Board of Trustees: Jeanne Thomas (Assistant Treasurer, Connie Hurtt (Trustee), and Bob McCracken (Treasurer).

First Congregational Church of Old Lyme				
Proposed 2015 Budget - SUMMARY				
and Comparison to 2014				
	2014	2015	+/- 2014	
REVENUES				
PLEDGES & OFFERINGS	\$679,850.00	\$684,850.00	\$5,000.00	
INTEREST & DIVIDENDS	\$111,448.00	\$105,004.00	(\$6,444.00)	
OTHER INCOME	\$26,474.50	\$25,000.00	(\$1,474.50)	
Total REVENUES	\$817,772.50	\$814,854.00	(\$2,918.50)	
EXPENSES				
MINISTERS				
SENIOR MINISTER	\$92,239.45	\$95,971.20	\$3,731.75	
ASSOCIATE MINISTER-CRG	\$98,590.52	\$99,608.95	\$1,018.43	
ASSOCIATE MINISTER-RTC	\$74,290.58	\$0.00	(\$74,290.58)	
ASSOCIATE MINISTER-CDS	\$0.00	\$70,882.98	\$70,882.98	
CHAPEL & LAY MINISTERS	\$10,300.00	\$10,300.00	\$0.00	
MIN OF VISITATION-EMF	\$0.00	\$0.00	\$0.00	
Total MINISTERS	\$275,420.55	\$276,763.13	\$1,342.58	
CHRISTIAN EDUCATION				
SUNDAY SCHOOL	\$14,494.00	\$10,664.00	(\$3,830.00)	
CONFIRMATION	\$500.00	\$1,000.00	\$500.00	
JUNIOR PF	\$4,500.00	\$2,500.00	(\$2,000.00)	
SENIOR PF	\$4,700.00	\$2,000.00	(\$2,700.00)	
ADULT EDUCATION	\$1,500.00	\$500.00	(\$1,000.00)	
ALL CHURCH EVENTS	\$0.00	\$1,000.00	\$1,000.00	
Total CHRISTIAN EDUCATION	\$25,694.00	\$17,664.00	(\$8,030.00)	
MUSIC				
CHURCH OFFICE	\$46,781.00	\$57,658.00	\$10,877.00	
PROPERTY	\$37,550.00	\$37,920.00	\$370.00	
DEACONS	\$145,665.00	\$133,500.00	(\$12,165.00)	
LAY EMPLOYEES	\$5,400.00	\$4,670.00	(\$730.00)	
	\$136,874.00	\$141,911.00	\$5,037.00	
BENEVOLENCES				
MISSION BUDGET TO BE ALLOCATED	\$0.00	\$90,000.00	\$90,000.00	
UCC	\$18,000.00	\$0.00	TBD	
MISSION EDUCATION FUND	\$14,700.00	\$0.00		
DIRECT PARTNER SUPPORT	\$6,634.40	\$0.00		
PARTNERSHIP COMMITTEES	\$900.00	\$0.00		
LOCAL OUTREACH	\$49,765.60	\$0.00		↓
Total BENEVOLENCES	\$90,000.00	\$90,000.00	\$0.00	
OTHER EXPENSES				
	\$54,387.95	\$54,767.87	\$379.92	
Total EXPENSES	\$817,772.50	\$814,854.00	(\$2,918.50)	
Surplus/(Deficit)	\$0.00	\$0.00	\$0.00	

First Congregational Church of Old Lyme			
Proposed 2015 Budget - DETAIL Page 1 of 6			
and Comparison to 2014			
	2014	2015	+/- 2014
REVENUES			
PLEDGES & OFFERINGS			
040000 - PLEDGES-CURRENT YEAR	\$590,000.00	\$600,000.00	\$10,000.00
040001 - PLEDGES -PRIOR YEAR	\$5,000.00	\$5,000.00	\$0.00
040002 - OPEN PLATE	\$20,000.00	\$20,000.00	\$0.00
040003 - ADDITIONAL CURRENT YR CONTRIBS	\$15,000.00	\$15,000.00	\$0.00
040004 - MEMB NON-PLEDGE CONTRIBS	\$20,000.00	\$15,000.00	(\$5,000.00)
040005 - CHURCH SCHOOL PLATE	\$50.00	\$50.00	\$0.00
040007 - LADIES BENEVOLENT SOCIETY	\$20,000.00	\$20,000.00	\$0.00
040008 - SOUTH LYME CHAPEL	\$9,800.00	\$9,800.00	\$0.00
Total PLEDGES & OFFERINGS	\$679,850.00	\$684,850.00	\$5,000.00
INTEREST & DIVIDENDS			
040100 - INTEREST & DIVIDENDS	\$2,500.00	\$2,500.00	\$0.00
040101 - ENDOWMENT	\$108,948.00	\$102,504.00	(\$6,444.00)
Total INTEREST & DIVIDENDS	\$111,448.00	\$105,004.00	(\$6,444.00)
OTHER INCOME			
040201 - BUILDING USAGE	\$20,000.00	\$15,000.00	(\$5,000.00)
040202 - MISC.	\$0.00	\$10,000.00	\$10,000.00
040203 - CARRYOVER FROM PRIOR YEAR	\$6,474.50	\$0.00	(\$6,474.50)
Total OTHER INCOME	\$26,474.50	\$25,000.00	(\$1,474.50)
Total REVENUES	\$817,772.50	\$814,854.00	(\$2,918.50)

First Congregational Church of Old Lyme			
Proposed 2015 Budget - DETAIL page 2 of 6			
and Comparison to 2014			
	2014	2015	+/- 2014
EXPENSES			
MINISTERS			
SENIOR MINISTER			
050000 - SALARY-SRJ	\$55,825.00	\$56,942.00	\$1,117.00
050001 - HEALTH & LIFE INS-SRJ	\$18,997.08	\$22,270.05	\$3,272.97
050002 - ANNUITY-PCUSA-SRJ	\$9,911.47	\$10,108.25	\$196.78
050003 - AUTO ALLOWANCE-SRJ	\$3,000.00	\$2,000.00	(\$1,000.00)
050005 - SOCIAL SECURITY ALLOW-SRJ	\$7,710.00	\$7,855.00	\$145.00
050007 - HEALTH INS CONTRIB-SRJ	(\$4,404.10)	(\$4,404.10)	\$0.00
050008 - PHONE & COMPUTER	\$1,200.00	\$1,200.00	\$0.00
Total SENIOR MINISTER	\$92,239.45	\$95,971.20	\$3,731.75
ASSOCIATE MINISTER-CRG			
050200 - SALARY-CRG	\$53,791.00	\$39,509.00	(\$14,282.00)
050201 - HEALTH & LIFE INS-CRG	\$5,289.00	\$5,287.64	(\$1.36)
050202 - ANNUITY CONTRIB-FCCOL-CRG	\$10,166.52	\$10,151.31	(\$15.21)
050203 - AUTO ALLOWANCE-CRG	\$3,000.00	\$4,000.00	\$1,000.00
050204 - HOUSING ALLOWANCE-CRG	\$18,827.00	\$33,000.00	\$14,173.00
050205 - SOCIAL SEC ALLOW-CRG	\$7,517.00	\$7,661.00	\$144.00
Total ASSOCIATE MINISTER-CRG	\$98,590.52	\$99,608.95	\$1,018.43
ASSOCIATE MINISTER-RTC			
050500 - SALARY-RTC	\$40,959.00	\$0.00	(\$40,959.00)
050501 - HEALTH & LIFE INS-RTC	\$4,999.00	\$0.00	(\$4,999.00)
050502 - ANNUITY CONTRIB-FCCOL-RTC	\$7,454.58	\$0.00	(\$7,454.58)
050503 - AUTO ALLOWANCE-RTC	\$3,000.00	\$0.00	(\$3,000.00)
050504 - HOUSING ALLOWANCE-RTC	\$12,288.00	\$0.00	(\$12,288.00)
050505 - SOCIAL SEC ALLOW-RTC	\$5,590.00	\$0.00	(\$5,590.00)
Total ASSOCIATE MINISTER-RTC	\$74,290.58	\$0.00	(\$74,290.58)
ASSOCIATE MINISTER-CDS			
050100 - SALARY-CDS	\$0.00	\$21,884.00	\$21,884.00
050101 - HEALTH & LIFE INS-CDS	\$0.00	\$4,978.26	\$4,978.26
050102 - ANNUITY CONTRIB-FCCOL-CDS	\$0.00	\$7,263.72	\$7,263.72
050103 - AUTO ALLOWANCE-CDS	\$0.00	\$1,500.00	\$1,500.00
050105 - SOCIAL SEC ALLOW-CDS	\$0.00	\$5,257.00	\$5,257.00
050106 - HOUSING ALLOWANCE-CDS	\$0.00	\$30,000.00	\$30,000.00
Total ASSOCIATE MINISTER-CDS	\$0.00	\$70,882.98	\$70,882.98
CHAPEL & LAY MINISTERS			
050300 - CHAPEL MINISTER	\$7,800.00	\$7,800.00	\$0.00
050301 - SEMINARS & MISC.	\$2,500.00	\$2,500.00	\$0.00
Total CHAPEL & LAY MINISTERS	\$10,300.00	\$10,300.00	\$0.00
Total MINISTERS	\$275,420.55	\$276,763.13	\$1,342.58

First Congregational Church of Old Lyme			
Proposed 2015 Budget - DETAIL Page 3 of 6			
and Comparison to 2014			
	2014	2015	+/- 2014
CHRISTIAN EDUCATION			
SUNDAY SCHOOL			
051000 - CHURCH SCHOOL ASSISTANT	\$11,994.00	\$6,000.00	(\$5,994.00)
051001 - PROGRAMS	\$3,000.00	\$0.00	(\$3,000.00)
051002 - SUPPLIES/CE	\$2,500.00	\$6,000.00	\$3,500.00
051003 - CURRICULUM	\$0.00	\$1,000.00	\$1,000.00
051005 - CHILD CARE	\$1,000.00	\$1,664.00	\$664.00
051006 - TRANSFER FR YOUTH ED FUND	(\$4,000.00)	(\$4,000.00)	\$0.00
Total SUNDAY SCHOOL	\$14,494.00	\$10,664.00	(\$3,830.00)
CONFIRMATION			
051102 - CONFIRMATION PROGRAM	\$500.00	\$1,000.00	\$500.00
Total CONFIRMATION	\$500.00	\$1,000.00	\$500.00
JUNIOR PF			
051101 - JR PF PROGRAMS	\$500.00	\$1,000.00	\$500.00
051103 - JUNIOR PF LEADERS	\$4,000.00	\$1,500.00	(\$2,500.00)
Total JUNIOR PF	\$4,500.00	\$2,500.00	(\$2,000.00)
SENIOR PF			
051200 - PF PROGRAMS	\$200.00	\$1,000.00	\$800.00
051201 - PF SUPPLIES	\$500.00	\$0.00	(\$500.00)
051203 - SR. PF LEADERS	\$4,000.00	\$1,000.00	(\$3,000.00)
Total SENIOR PF	\$4,700.00	\$2,000.00	(\$2,700.00)
ADULT EDUCATION			
051300 - ADULT ED PROGRAMS	\$250.00	\$250.00	\$0.00
051301 - ADULT ED SUPPLIES	\$750.00	\$0.00	(\$750.00)
051303 - ADULT ED HONORARIUM	\$500.00	\$250.00	(\$250.00)
Total ADULT EDUCATION	\$1,500.00	\$500.00	(\$1,000.00)
ALL CHURCH EVENTS			
051400 - ALL CHURCH EVENTS	\$0.00	\$1,000.00	\$1,000.00
Total ALL CHURCH EVENTS	\$0.00	\$1,000.00	\$1,000.00
Total CHRISTIAN EDUCATION	\$25,694.00	\$17,664.00	(\$8,030.00)
MUSIC			
052001 - MUSIC DIRECTOR	\$27,000.00	\$31,000.00	\$4,000.00
052002 - MUSIC SUPPLIES	\$1,000.00	\$2,000.00	\$1,000.00
052003 - MUSIC PROGRAM	\$2,000.00	\$6,000.00	\$4,000.00
052004 - ORGANIST SUBSTITUTE	\$3,000.00	\$2,500.00	(\$500.00)
052005 - CONTINUING EDUCATION	\$200.00	\$200.00	\$0.00
052006 - MAINTENANCE/MUSIC	\$1,750.00	\$1,750.00	\$0.00
052010 - ALL AGE CHOIR DIRECTOR	\$6,831.00	\$6,968.00	\$137.00
052011 - PROF SOLOIST-TENOR	\$6,000.00	\$6,120.00	\$120.00
052012 - SECT LDR-SOPRANO	\$6,000.00	\$6,120.00	\$120.00
052013 - CHILDREN'S CHOIR DIRECTOR	\$0.00	\$2,000.00	\$2,000.00
052015 - FROM MEM MUSIC FUND	(\$7,000.00)	(\$7,000.00)	\$0.00
Total MUSIC	\$46,781.00	\$57,658.00	\$10,877.00
CHURCH OFFICE			
053002 - WEBSITE ADMINISTRATION	\$500.00	\$500.00	\$0.00
053006 - TELEPHONE	\$4,800.00	\$6,000.00	\$1,200.00
053007 - OFFICE SUPPLIES	\$9,500.00	\$9,500.00	\$0.00
053009 - POSTAGE	\$7,000.00	\$6,500.00	(\$500.00)
053010 - EQUIPMENT	\$750.00	\$500.00	(\$250.00)
053011 - SERVICE & LEASE CONTRACTS	\$12,000.00	\$11,000.00	(\$1,000.00)
053013 - SOFTWARE SUPPORT	\$3,000.00	\$3,920.00	\$920.00
Total CHURCH OFFICE	\$37,550.00	\$37,920.00	\$370.00

First Congregational Church of Old Lyme			
Proposed 2015 Budget - DETAIL Page 4 of 6			
and Comparison to 2014			
	2014	2015	+/- 2014
PROPERTY			
054002 - PROPANE	\$1,200.00	\$1,500.00	\$300.00
054003 - HEAT	\$27,000.00	\$32,000.00	\$5,000.00
054004 - ELECTRICITY	\$18,000.00	\$16,000.00	(\$2,000.00)
054005 - REPAIRS & MAINTENANCE	\$10,000.00	\$10,000.00	\$0.00
054006 - PROPERTY SUPPLIES	\$4,000.00	\$4,000.00	\$0.00
054007 - INSURANCE-CHURCH	\$41,465.00	\$36,000.00	(\$5,465.00)
054008 - CLEANING SERVICES	\$12,000.00	\$12,000.00	\$0.00
054009 - SERVICE CONTRACTS	\$7,000.00	\$7,000.00	\$0.00
054010 - MAJOR MAINTENANCE	\$20,000.00	\$10,000.00	(\$10,000.00)
054012 - PARSONAGE MAINTENANCE	\$5,000.00	\$5,000.00	\$0.00
Total PROPERTY	\$145,665.00	\$133,500.00	(\$12,165.00)
DEACONS			
055000 - DEACONS FLOWERS	\$500.00	\$500.00	\$0.00
055001 - DEACONS SUPPLIES	\$600.00	\$1,200.00	\$600.00
055002 - DEACONS COMMUNION	\$200.00	\$200.00	\$0.00
055004 - DEACONS GIFTS	\$100.00	\$100.00	\$0.00
055005 - DEACONS TRANSPORTATION	\$3,500.00	\$2,170.00	(\$1,330.00)
055006 - DEACONS NEW MEMBER'S FUNCTIONS	\$500.00	\$500.00	\$0.00
Total DEACONS	\$5,400.00	\$4,670.00	(\$730.00)
LAY EMPLOYEES			
056003 - SECRETARY	\$44,443.00	\$45,330.00	\$887.00
056004 - SECRETARY/PART TIME	\$750.00	\$750.00	\$0.00
056005 - BOOKKEEPER	\$17,160.00	\$17,503.00	\$343.00
056006 - SEXTON	\$34,539.00	\$35,230.00	\$691.00
056007 - ASST SEXTON	\$500.00	\$750.00	\$250.00
056008 - HEALTH & LIFE INS	\$15,113.00	\$16,601.00	\$1,488.00
056009 - ANNUITIES	\$4,739.00	\$4,834.00	\$95.00
056011 - HEALTH INS CONTRIB	\$0.00	(\$108.00)	(\$108.00)
056013 - TRAVEL REIMBURSEMENT	\$100.00	\$100.00	\$0.00
056015 - CHURCH ADMINISTRATOR	\$19,530.00	\$20,921.00	\$1,391.00
Total LAY EMPLOYEES	\$136,874.00	\$141,911.00	\$5,037.00

First Congregational Church of Old Lyme			
Proposed 2015 Budget - DETAIL Page 5 of 6			
and Comparison to 2014			
	2014	2015	+/- 2014
BENEVOLENCES			
UCC			
058004 - MISSION BDGT TO BE ALLOCATED	\$0.00	\$90,000.00	
		TBD	
058000 - UCC SUPPORT	\$18,000.00		
MISSION EDUCATION FUND			
058101 - GREEN GRASS CHURCH	\$3,000.00		
058102 - SOUTH AFRICAN JOURNEYS	\$3,000.00		
058104 - ISRAEL/PALESTINE	\$4,000.00		
058107 - MORNINGSTAR CAMP	\$2,200.00		
058108 - HAITI SCHOLARSHIPS	\$2,500.00		
Total MISSION EDUCATION FUND	\$14,700.00		
DIRECT PARTNER SUPPORT			
058200 - STOREFRONT-HARLEM	\$2,500.00		
058202 - PLOWSHARES	\$1,000.00		
058208 - ISRAEL/PALESTINE	\$3,000.00		
058210 - GREEN GRASS	\$134.40		
Total DIRECT PARTNER SUPPORT	\$6,634.40		
PARTNERSHIP COMMITTEES			
058301 - GREEN GRASS	\$300.00		
058302 - SOUTH AFRICA	\$300.00		
058303 - ISRAEL/PALESTINE	\$300.00		
Total PARTNERSHIP COMMITTEES	\$900.00		
LOCAL OUTREACH			
058401 - COMMITTEE OF ENVIRONMENT	\$1,500.00		
058403 - MISSION SAVINGS FUND	\$9,515.60		
058406 - HOSP-CHAPLANCIES-L&M	\$250.00		
058407 - HOSP CHAPLANCIES MDLX	\$250.00		
058408 - HABITAT FOR HUMANITY	\$2,000.00		
058411 - SAFE FUTURES	\$2,000.00		
058414 - HEALTH & WELFARE COMM.	\$2,000.00		
058415 - NEW LONDON SOUP KITCHEN	\$2,500.00		
058417 - THAMES RIVER FAMILY PROGRAM	\$1,000.00		
058418 - MARTIN HOUSE	\$1,000.00		
058419 - ALLIANCE FOR LIVING	\$1,000.00		
058421 - COVENANT SHELTER	\$2,000.00		
058422 - IRC/NEW YORK	\$750.00		
058424 - THE COALITION	\$500.00		
058425 - MIDNIGHT RUN	\$250.00		
058426 - CROSBY FUND FOR HATIAN EDUCATION	\$3,500.00		
058427 - BRIDGES OF HOPE	\$3,000.00		
058428 - FRESH NEW LONDON	\$2,000.00		
058431 - HOMELESS HOSPITALITY CENTER	\$4,000.00		
058433 - A SACRED PLACE	\$1,000.00		
continued.....			

First Congregational Church of Old Lyme			
Proposed 2015 Budget - DETAIL Page 6 of 6			
and Comparison to 2014			
	2014	2015	+/- 2014
Benevolences - continued			
		TBD	
058438 - INDIA MICRO CREDIT	\$750.00		
058442 - CAIR	\$1,000.00		
058444 - CT COALITION TO END	\$500.00		
058447 - LITERACY VOLUNTEERS VALLEY SHORE	\$500.00		
058448 - MIDDLE EAST CHILDREN'S ALLIANCE	\$2,000.00		
058449 - SIMPLY SMILES	\$1,000.00		
058450 - EVERY DOLLAR FEEDS KIDS	\$1,500.00		
058452 - IINTEG REFUGEE &IMIGRANT SVCS	\$1,500.00		
058453 - HOMELESS HOSPITALITY SAT. DINNERS	\$1,000.00		
Total LOCAL OUTREACH	\$49,765.60	▼	
Total BENEVOLENCES	\$90,000.00	\$90,000.00	
OTHER EXPENSES			
059000 - PAYROLL TAX	\$12,137.95	\$12,009.28	(\$128.67)
059001 - WORKER'S COMP	\$5,000.00	\$4,600.00	(\$400.00)
059003 - LOAN REPAYMENT	\$32,500.00	\$32,500.00	\$0.00
059007 - MISC./O.E.	\$1,000.00	\$908.59	(\$91.41)
059010 - STOCK EXCHANGE FEES	\$750.00	\$750.00	\$0.00
059013 - STEWARDSHIP CAMPAIGNS	\$3,000.00	\$4,000.00	\$1,000.00
Total OTHER EXPENSES	\$54,387.95	\$54,767.87	\$379.92
			\$0.00
Total EXPENSES	\$817,772.50	\$814,854.00	(\$2,918.50)
Surplus/(Deficit)	\$0.00	\$0.00	

The First Congregational Church of Old Lyme Board of Trustees Annual Report – 2014

Trustees: Chair, David Long (Property), Russell Learned (Property), Allison Hine (Audit), Charlie Hosley, Connie Hurtt (Budget), Lee Carpenter (Audit), Carol Levy, Scott Mahon (Secretary), Patsy McCook.

Ex-officio Members: Church Ministers, Bob McCracken (Treasurer/Church Administrator) Henry May (Endowment), Bruce Anderson (Personnel).

Trustees meet on the 2nd Tuesday of the Month.

In accordance with the Church Bylaws, ‘The Board of Trustees shall supervise the procurement, custody, and care of all Church property and the management of the financial affairs of the Church with the limitation that no real property shall be bought, sold, mortgaged, leased, or transferred without specific authorization by the congregation. In addition, the Board shall maintain custody of all Church funds, including funds raised or granted to any Church board, council, committee, or other Church sponsored associations.’

‘It shall be the particular responsibility of the Board of Trustees to appoint and supervise the following committees:’

ENDOWMENT:

The Endowment Committee is charged with the management of all financial gifts, contributions and bequests (not specifically designated) and invests them, with guidance of an advisor at Morgan Stanley/Smith Barney, in a perpetual endowment fund which is separate from the church operating funds. Henry May is Chair of the committee and is joined by Ned Perkins, Jim Fairfield-Sonn and David Stanland. Though the Church is conservatively invested, endowment values tracked very well over 2014. See the Endowment Committee Report for 2014 details.

PROPERTY:

This committee has been particularly busy over the last two years. Under the leadership of Russell Learned, the Property Committee consisting of Sally McCracken, Maurice Ancil and Jack Hine recommended and completed the following projects which were approved by the Trustees for 2014:

- Completed Meeting House slate roof repair. Also, completed an overall inspection of the roof which shows approximately a five to ten year expected life remaining.
- Senior Minister and Associate Minister’s offices were re-painted.
- Completed painting of the Sheffield Auditorium including ceiling, walls and floor refinishing.
- The Parsonage Barn was renovated including 2nd floor clean up and organized for WES storage. Double door units were installed on first and second floor. 2nd floor walls and ceiling were painted. Electrical upgrade was completed.
- Parsonage driveway was repaved.
- Parish House boiler repairs.
- Repaired and repainted the 3rd floor rooms of the Parsonage.

(continued)

- Parish House roof was replaced in preparation for installation of solar panels. Solar panel connecting extenders were installed once the old roof was removed. Tree trimming was performed on trees shading and overhanging the west roof.
- Solar Panels: FCCOL entered into a Power Purchase Agreement (PPA) with Star Power, LLC in September 2014. Installation of the panels will be done by Waldo Renewable Electric, LLC of Old Saybrook. Panel extenders were installed week of November 17 working with the reroofing contractor. The panel delivery however, has been delayed due to manufacturing material shortages and high demand for panels. The delivery of the panels is not expected until early spring 2015.

Looking forward:

- The Committee has developed a “major Maintenance Projects’ list – items include:
 - Parsonage Furnace Replacement.
 - Parish House lower level hallway chair rail installation.
 - Flooring replacement lower level of Parish House.
 - Meeting House chimney repointing.
 - Pilgrim House painting & minor maintenance.

The Property Committee and the Board have been very busy this year. FCCOL has at least 35,000 sq. ft. of building area to maintain both interior and exterior. Our ‘newest’ major building project was the Parish House which was completed 25 years ago! ‘Nothing last forever’ – as told to me by a carpenter friend of mine who spent fifty years in the trade. Things ware out and need rebuilding or replacement. The Board continues to work very hard on bringing the buildings up to date at the least possible dollar while maintaining a high level of quality.

BUDGET:

This time of year is always a challenge: balancing the current budget and making realistic goals for the coming fiscal year. The cooperative communication among those responsible for various financial components of the church help to assure that the budget is balanced. These components include the Endowment Committee, Stewardship Board, church staff and Trustees. Bob McCracken, Church Treasurer and Administrator, does an excellent job monitoring the finances and providing essential financial information on a regular basis so the decisions can be made by the Trustees regarding the budget and necessary work projects. Jeanne Thomas is the assistant treasurer and Trustee Board member Connie Hurtt along with Bob McCracken make up the Budget Committee.

AUDIT:

The Audit Committee consists of Bob McCracken, Allison Hine & Lee Carpenter. The Committee’s task is to oversee financial policies and procedures as well as assuring that periodic external audits of all Church finances are performed. A full audit, which includes policies and controls, was done last year. The committee continues to follow up to be sure the suggestions are acted upon.

(continued)

PERSONNEL:

Bruce Anderson leads the Personnel Committee. Sue Frost and Roger Smith are committee members. The Committee reports to the Board of Trustees and deals with issues such as compensation, benefits, recruitment, interviewing, performance reviews and Human Relations policy issues. Bruce Kenyon stepped down as Personnel Chair on September 1, 2014 and has moved to North Carolina. Bruce led the way with the rewriting of the Church's Human Resources Policies and we are forever indebted for his hard work. In November of this year, Kendall Perkins stepped down as Youth Education chair to take a job at St. Anne's Episcopal Church in Old Lyme. Kendall had served in the position for twelve years.

CONCLUSION:

I want to thank all the Board of Trustees members for their tremendous work ethic and spirit of enthusiasm while dealing with a wide range of issues and concerns regarding the maintenance of these beautiful edifices that make up the FCCOL. We could not have performed our duties without the help and leadership of all the church staff, ministers and laity for their tireless dedication and effectiveness in making 2014 such a successful year. Thank you again to all.

Respectfully submitted:
David R. Long, Chair

Church Council Annual Report 2014

The Church Council's purpose is to coordinate the various church boards and committees efforts and activities to ensure the implementation of our total church program, and to make each board and committee aware of the activities of the other boards and committees. There are sixteen members, ten of whom are chairs of our church boards and committees, and six at-large. The Church Council meets 4-5 times per year.

Thank you to all the board and committee chairs and representatives who prepared written reports for the Church Council and gave in-person highlights at our meetings. Thank you as well to our at-large members whose terms are expiring; Blair McBeth, Karen Geisler and Jane Stubenbord. Chris McLean and Janice Thaxter are additional at-large members who continue into 2015.

We look forward to another eventful year in the life of our congregation.

Respectfully submitted, Bruce Anderson, Chair

ENDOWMENT COMMITTEE REPORT 2014

The Endowment Committee is responsible for the management and investment of all gifts, contributions and bequests not specifically designated. Such funds are placed in a perpetual endowment fund. The objectives for management of the fund are a) preservation and growth of the fund to ensure support of the Church if needed in times of severe economic downturn and/or for other unusual and compelling needs and b) to support the annual operating budget of the Church.

In November 2013, the Trustees approved a distribution of up to 7% for the 2014 and 2015 budgets. For the 2014 budget, this was approved by the congregation at the 2013 Annual Meeting February 2, 2014. Our bylaws allow up to 5% without any approvals. In 2014, the fund provided \$108,948 or 7% of the previous 3-year average value in support of church operations.

The Endowment portfolio is approximately 70% stocks and 30% bonds. The results in 2014 were a gain of 8.11%. In recent years, our portfolio has become more globally diversified with U.S. corporations that continue to expand their footprint outside the United States, and with the addition of non-U.S. companies. In 2014, the endowment continued to reduce its holdings in fossil fuel stocks and continued to add energy companies considered to be more environmental friendly. The bond portion of the portfolio is conservatively invested, principally with shorter-term securities.

The investment results of the endowment since inception (1988) compare favorably to the S&P500 and a 70/30 mix of the S&P500 Index and the Barclays Intermediate-Term Government/Credit Bond Index/Treasury Bills.

	Year 2014	Since Inception (1988)
Our Endowment *	8.11%	8.40%
70% S&P500 / 20% Intermediate Gov/Credit Bond Index / 10% Treasury Bills	10.15%	9.10%
S&P500	13.69%	10.43%
BC Intermediate Gov/Credit Bond Index	3.12%	6.21%

ENDOWMENT FUND STATEMENT FOR 2014

Opening Value**	\$ 2,158,408
Support of Church Operations	\$ 108,948
Additions to the Endowment	\$ 52,115
Closing Value***	\$ 2,256,889

* *Rates of Return Gross of Fees*

***Includes \$157,064 in restricted funds*

****Includes \$169,802 in restricted funds*

(included)

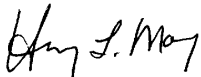
Our Church is very appreciative of gifts to the Endowment Fund. We encourage all of our members and friends to consider the needs and mission of our Church in their estate planning.

The Spire Society was formed in 2007 to acknowledge those members and friends who have named our church in their wills and bequests. Please call the office or someone on the Endowment Committee if you would like information on planned giving.

<u>Year</u>	<u>Year End Value</u>	<u>Church Support</u>
2014	\$ 2,256,889	\$ 108,948
2013	\$ 2,158,408	\$ 74,650
2012	\$1,794,656	\$72,707
2011	\$ 1,530,496	\$ 76,309
2010	\$ 1,660,831	\$ 78,658
2009	\$ 1,579,374	\$ 70,000
2008	\$ 1,348,265	\$ 85,370
2007	\$ 1,912,952	\$ 79,000
2006	\$ 1,780,674	\$ 69,500
2005	\$ 1,671,561	\$ 68,000

The Committee meets quarterly with our investment advisor, The Oakley Wing Group of Morgan Stanley, and continues to monitor the performance of the portfolio as well as report to the Board of Trustees.

Respectfully submitted,



Henry May, Chairman
The Endowment Committee
Ned Perkins, Jim Fairfield-Sonn, David Stanland

Board of Stewardship Annual Report 2014

This report covers two Stewardship Campaigns, 2014 and 2015 as part of each occurred during this reporting year.

Our 2014 campaign had a goal of \$650,000. We received Statements of Intent from 393 members and friends with a dollar total of \$604,960. Although we did not make the goal, total pledges exceeded 2013 by about \$20,000. We are tremendously thankful for the support the Church received from so many.

In an attempt to set a realistic goal based on the church's demographics and past support, our goal for the 2015 campaign is \$625,000. This covers the support needed to continue our current missions and provides for an opportunity to realize some of the new objectives such as providing scholarships for church members to participate in activities they may not be able to afford individually. Our targeted participation level is for 410 statements of intent. It is not clear whether we will make the goal, but the level of support should, at least, equal last year. You will be advised of the progress frequently through various church publications.

To achieve these goals we did the following:

- Sent an initial mailing to the congregation asking for their support, and including a statement of intent card plus other information.
- As required, a follow-up letter was sent, and additional contacts during January will also be made.
- Developed a new Stewardship Brochure.
- Organized a Stewardship Sunday celebration, including a jazz band, food, etc.
- Organized five moments of Stewardship during Sunday services delivered by Members of our congregation.
- Continued the use of display boards honoring the work of our Church Boards. These display boards are prepared each year and displayed during our coffee hours.
- Participated in a donor luncheon hosted by Roger and Marian Smith at their home.
- Continued the weekly display of a "Thank You Board" honoring members who have submitted a Statement of Intent. The Board has been displayed most Sundays, and a final Board will be prepared after the Campaign ends.
- In addition, we prepare a display that shows our progress against our goals.
- Sent personalized thank you letters to all who submitted a Gift intent.
- Wrote numerous reports for the Church Newsletter and the Sunday Bulletins
- As of this printing, we have received 338 commitments totaling \$521,931. We are very grateful to all those members who have once again expressed their intention to support our Church including the 148 who have increased their gifts this year.

Our church has an impact on people in many different places and in many different ways. None of it happens without the continuing support of you and me. We should all be impressed by this church's legacy and the continuing work done by our Church to improve the lives of members of our Church, our community, and people throughout the world. The resources you commit to this Church truly produce real value.

All of us on the Board of Stewardship want to thank our Ministers and Bob McCracken for their invaluable help, with us at every meeting providing guidance, ideas and support, and to Joanie May who spends literally countless hours behind the scenes. Their interest in Stewardship is critical to the success of our Church.

This job could not be done without a team ready to bring their time and talents to the task. I sincerely thank each member of our Stewardship Board for their work in this year's campaign. They deserve all of our thanks.

Submitted by your Board of Stewardship - Alan Howell, Sandy Long, Mary Charlton, Mike Gentry, Barbara Smith, Lee Whitaker, Emily Fisher, Ken McGrath and George Clough

**FIRST CONGREGATIONAL CHURCH OF OLD LYME
BOARD OF YOUTH EDUCATION
ANNUAL REPORT 2014**

The Board of Youth Education and God's Neighborhood Program have had a good year, full of transition as we said so long to Becky Crosby and welcomed Chris Solimene in August. The mission of the board is to create and present an engaging curriculum to the children of our congregation and to involve them in the life of the church. This year the children continue to be involved in ushering, giving the children's sermon, preparing and serving at coffee hour, sharing their musical gifts and presenting theatrical productions. Our youth continue to participate in mission trips to Palestine, Israel and Green Grass, and share their experiences with the congregation. From preschool through JPF we currently have approximately 53 children and youth registered in our program, with a weekly attendance of about 35. JPF (grades 6-8) has met with Danny and Deanna Donovan along with Kendall Perkins for fun activities as well as service projects; they have an interest in the environment as well as promoting dental health.

SPF is a large group of 27, 9 of whom are confirmands. SPF members volunteer as helpers in our younger classrooms and otherwise meet as a group a couple of times a month. The start of 2014 SPF was led by seminarian Erin Grayson; the second half of the year Allison Hine returned to this role, assisting Chris Solimene. SPF (grades 9-12) meets once a month at the New London Homeless Hospitality Center, providing a hearty snack and fellowship. The confirmation process has expanded to a several-month program, with each confirmand further exploring their faith with a mentor they've chosen.

We continue to spend time addressing the issue of declined attendance in Sunday School, which we believe is due to the increase of club sports on Sunday mornings, children sharing time with parents who live in two different towns, and busy schedules of working parents.

The curriculum theme January – June 2014 was "Seeing, Loving and Following" with an increased emphasis on Bible stories. Under Chris' direction for September – December 2014 we changed to a rotation model. First was "What does God look like?", then "Friendship", and lastly "The Christmas Story". The children spend half the time with their homeroom teacher and then are joined by a Rotation leader.

Over the past year special activities included a play "The Really, Really Good Samaritans", written by Becky Crosby, another play "Mary Magdalene" written by one of our JPF members, Kylie Hall, and the Christmas pageant, which we lovingly refer to as the "Christmas Miracle". Summer Sunday School, with a nature theme, including hikes, continues to be popular with the children and youth.

Diversity Sunday activities and presentations were: making supply bags for guests at the New London Hospitality Center; Earth Day; Children's Day; and stories and music with our Green Grass Lakota friends and Palestinian musicians of Beit Sahour.

God's Neighborhood Children's choir has continued under the direction of Simon Holt and Lisa Feltes and they sang for Easter and Christmas services.

(continued)

The BYE presented their tri-fold board for the 2014 Stewardship Campaign, representing how we enhance our church's opportunity to give back to our community. Programs developing community spirit within the God's Neighborhood program as well as building intergenerational relationships within our church

included: potluck meals; Celebration of Musical Gifts/Coffee House; bowling trips; caroling at Essex Meadows; apple picking, then baking and delivering crisps; Advent wreath-making; Out Of The Box homeless immersion overnight; and community service such as: Midnight Run with a meal and clothing delivered to homeless in NYC; meals prepared and served at the New London Soup Kitchen by the SPF and another evening by the BYE.

Our Board is committed to the safety of our children and has continued to help shape our Safe Church policy.

Special thanks to the ongoing dedication and commitment of our teachers, rotation leaders, teenage volunteers and board members. Thank you so much to our former Sunday School Coordinator, Kendall Perkins, and former Associate Minister The Reverend Rebecca Crosby, and our new Associate Minister of Children, Youth and Families, Christopher Solimene. Your support, vision and leadership is admired and appreciated!

Respectfully Submitted,
Susan Lang
Chairperson of the Board of Youth Education

Elected Board Members:

Lisa Doggart
Josh Edmed
Cathy Gentry
Beth Hamilton
Susan Lang
Justine Lavoie
Suzanne McCormack
Tracy McGlinchey
Gail Stevens

Ex-Officio Members:

Debra Boardman- Deacon
Reverend Rebecca Crosby
Lucia Kelsey- Deacon
Kendall Perkins
Christopher Solimene

Senior High Pilgrim Fellowship

Young people in grades 9-12 have been actively engaged in fellowship and service throughout the year. The early year included a successful Midnight Run, which was held in February. Much appreciation is given for the gifts Erin Grayson shared with the youth, organizing this and other opportunities for the first half of 2014.

Allison Hine and Chris Solimene now share in the leadership and planning, as of the autumn when Chris began serving at FCCOL. 27 young people registered for SPF. At a planning BBQ, they decided to commit themselves one Saturday night each month –attending the New London Hospitality Center in order to offer a light meal and spend time in discussion or playing games with the people there. This led to a Homeless Immersion Event, which was held in November. 16 young people slept outside in cardboard boxes and engaged in meaningful discussion and activities involving the plight of homelessness.

Many SPF members assist with the Church School as Helpers. Some were engaged in the Pageant. SPF also continues to help with worship through leading Children’s Sermons. Plans are underway for the SPF Mission Trip in April – a trip to interact with children and see firsthand the work of the Crosby Haiti Foundation.

Allison and I are grateful to the many youth of this church, who continue to participate in meaningful ways - putting their faith into action through service, building relationships and sharing fellowship.

Respectfully Submitted By

Christopher Solimene

BOARD OF MUSIC AND ARTS ANNUAL REPORT 2014

The Board of Music and Arts met as events required this year. This Board plays a mainly supportive role in the musical and artistic programs and events of the church, with our extraordinarily talented professional staff fashioning these rich opportunities for us to share in worship, praise and beauty. The highlights of this past year include an Art Tour of our church art works in January with members of our Board and preparation for a brochure with this information for members and visitors. A Celebration of Musical Gifts.

In February and Kira Willey’s concert in March cheered our spirits. The Senior Choir, under the direction of Simon Holt, enriched our Holy Week experience by performing Faure’s Requiem with orchestra on Maundy Thursday evening. May was delightful with the God’s Neighborhood Youth Art Show taking place in Fellowship Hall and remaining up for some weeks, giving us time to really enjoy the creativity of our young artists! This spring, a new program, Arts on the Road, under the direction of Board member, Don Male, took in some musical and artistic opportunities in the New Haven area. In the fall, the Board sponsored an Adult Forum, “Arts and Spirituality”, with Eve Todd and Marilyn Nelson sharing their faith and talents. Our Board also welcomed our new ministerial representative, Chris Solimene, and deacon liaison, Stephanie Kenny. In November, we were delighted to support Brian Cheney and Simon Holt in the recreation of Pavarotti and Wustman’s Recital in Carnegie Hall in 1988. Under the direction of Associate Minister Chris Solimene, FCCOL sponsored its first Coffee House experience to benefit our youth scholarship program with a packed house! The Senior Choir joined in the Ecumenical Thanksgiving Service at Christ the King Church and then prepared for celebration of “Lessons and Carols” on Christmas Eve. We look forward to the special year ahead!

We are grateful for all the wonderful, talented and giving people, young and old, who make the music and arts of this church alive in our hearts, minds and souls.

Respectfully submitted,
Elin Larson, Chair

Annual Report for 2014 for the Senior Choir

2014 has been another vibrant year for the Senior Choir! The group diligently rehearsed on Wednesday evenings and on Sunday mornings and by the end of the year had sung over a hundred pieces during our worship services. Not only is the group a wonderful musical ensemble that has such an important role in our worship, it also continues to be a supportive family within the Church community. I thank Lisa Feltes and Brian Cheney for their continued support as section leaders. They both bring so much to the group not only with their musical gifts but also their enthusiasm and encouragement.

2014 saw a couple of additions to the program. In April the choir sang Faure's *Requiem* with string orchestra, organ, horns and harp as part of our Maundy Thursday worship service. The music was preceded by a Seder Supper catered by Alison Holt who exchanged her apron for her viola! The choir sang magnificently, so much so that I hope a musical offering on Maundy Thursday will become an annual tradition. Towards Christmas we decided to push back our traditional Lessons and Carols service to Christmas Eve and the choir sang an uplifting program of seasonal music at both 8:00pm and 10:00pm services. Jill Maurer-Davis joined us for both services playing carols on her flute as prelude music. Moving the Lessons and Carols to Christmas Eve was well received by both choristers and congregation and I hope this also will become an annual tradition!

During the year a small group of the Senior Choir visited South Lyme Chapel to sing at services there and I know this was very much appreciated by those who worship there.

In November we joined with the choirs from Christ the King Church and Saint Ann's Episcopal Church for a very enjoyable Ecumenical Thanksgiving service at Christ the King – the singing was really exciting, as was Violeta Chan-Scott's organ playing!

Respectfully submitted, Simon Holt

Annual Report for 2014 Children's Choir

The Children's Choir convened on Wednesday afternoons starting in November, 2014 with the goal of singing in the Annual Pageant and on Christmas Eve, both of which were achieved. There were 5 young singers who participated ranging in age from 7 to 10. Our plan is to begin rehearsals again in the Spring to prepare for Mother's Day in May and Children's Day in June. Looking to the future, we are hoping to increase children's participation level and have more frequent musical contributions during church services throughout the church year.

Respectfully submitted by,
Lisa Feltes

BOARD OF MISSIONS ANNUAL REPORT 2014

The members of the Board of Missions were busy this year updating their knowledge of the local as well as distant partnerships and organizations we as a church support. As a result of this updated knowledge, the members were better able to understand the needs of these organizations and agree on reasonable financial contributions. Agencies and partnerships visited or personally contacted this year included Fresh New London; The Homeless Hospitality Center in New London; Safe Futures (formerly The Women's Center of SECT); A Sacred Place at York Women's Correctional Institute Niantic, CT; Every Dollar Feeds Kids where 100% of our donation goes to purchase food; Green Grass Church, Cheyenne River Reservation S.D.; Morning Star Camp, South Dakota (youth camp for our middle school students and Lakota students); Simply Smiles, South Dakota; Refugee and Immigration Services Agency, New Haven CT. The members plan to continue this quest of visiting as many of the organizations and agencies as possible in the coming year.

Sixty percent of the \$90,000 budget went to feed, shelter and educate local, regional, national and international recipients such as Shoreline Soup Kitchen, Safe Futures, New London, CT, Fresh New London, Literacy Volunteers, and Every Dollar Feeds Kids. Twenty percent went to support our Mission Education Fund and Partnerships such as Green Grass Church SD, South African, Israel/Palestine, The Crosby Fund for Haitian Education, The Store Front Academy in Harlem, N.Y., and the remaining 20 percent fulfilled our annual commitment to the United Church of Christ.

Thank you to our Board members for their thoughtful and dedicated work this year: Leslie Anderson, Martha Beaudoin, Fred Behringer, Diane Dennison, Jennifer Fries, Bob Potter, Stefanie Hall, Britt Sinay, Robert Shook, Julie Kuja representing Deacons and our minister representative Carleen Gerber for her guidance and expertise. A special thank you to those who have completed their three-year terms on the Board: Diane Dennison, Martha Beaudoin and our Deacon representative Julie Kuja. Their insights and contribution to our discussions will be missed.

Respectfully submitted,



Stefanie Hall, chairperson
January 9, 2014

Mission Outreach at The First Congregational Church of Old Lyme in 2014

This Ministers' Discretionary Fund of the First Congregational Church dispersed about \$40,000 this past year, to support local families in need. It is supported by this church's annual budget, by the Ladies Benevolent Society of this church, and, most importantly, by the annual Christmas Eve collection. We ask that you give as generously as you can.

In this past year, \$90,000 was dispersed by the Board of Missions to agencies within our community, New London County and the world. An additional \$70,000 was raised and disbursed by the Ladies Benevolent Society of our church – an extraordinary amount made possible by the hard work and success of the White Elephant Sale.

\$10,338 was raised for the "One Great Hour of Sharing" mission work of the UCC. An additional \$5,520 was given to support the operation of the food pantry, which takes place here every Saturday, and \$7,840 was contributed by individuals for the work of our Haitian ministries, made possible through the Crosby fund.

Individual gifts totaling \$2,000 were made to support the work of the Albert Street School in Johannesburg, S.A., which supports education for the refugee population of that city. An anonymous gift of \$5,000 was given to directly supplement the work of the Ministers' Discretionary Fund. Over \$500 was raised for the Crop Walk and UNICEF.

Also, this year we are very grateful to have received over \$73,000 from individuals and families to make possible our solar installation, scheduled to be completed in March of 2015 on the roof of Fellowship Hall.

Thus, a total of over \$304,000 in aid and support was made possible through the generosity of the people of this church.

All the agencies supported by this church are listed in random order:

The United Church of Christ; The Storefront School of Harlem, NYC; the Plowshares Institute; One Great Hour of Sharing (UCC); The Crosby Fund for Haitian Education; the Hospital Chaplaincy Programs of L&M and Middlesex Hospitals; Habitat for Humanity of SECT; Bethlehem University in Palestine; Safe Futures of New London (formerly the Women's Center of New London); New London Soup Kitchen; Homeless Hospitality Center of New London; Shoreline Soup Kitchens; Thames River Family Program; the Martin House; the Alliance for Living of SECT; the Covenant Shelter of New London; the International Rescue Committee of New York; the Midnight Run of New York City; Simply Smiles (outreach ministry for housing and medical support in Mexico and the Cheyenne River Reservation in South Dakota); the Shepherd's Field School of Beit Sahour; Old Lyme Children's Learning Center; Old Lyme Visiting Nurse; Center for Hospice Care of SECT; Lymes' Senior Center; Estuary Council of Seniors; Literacy Volunteers of Valley Shore; Warm the Children Fund; Church World Service; New Life Prison Ministry; the Ministers' Discretionary Fund of FCCOL; the Thai-Burma Project of The Women's Commission of the IRC of NYC; FRESH New London; Riverfront Children's Center; Camp Claire; Barbara Fund of York Prison; Lymewood Elderly Housing; Tree of Life; Ct. Coalition to End Homelessness; The Carter Center of Atlanta, Ga.; India micro-credit of Franciscan Brotherhood; Tribal Crafts; Every Dollar Feeds Kids; Middle East Children's Alliance; Integrated Refugee and Immigrant Services, Inc. of New Haven, Ct.; Israeli Committee Against House Demolitions.

2014 Adult Education Annual Report

The Adult Education Committee is responsible for planning Adult Forums, which interest our church members and provide valuable information. The program is run between the two church services during the school year. The Reverend Carleen Gerber serves as our pastoral liaison.

2014 Board Members and Officers:

Amy Cabiniss
Sharon Howell, Co Chair

Chuck Lynch
Susan Immordino
Joy Bylan, Co Chair

Alexandra Eadie-Friedmann, Deacon Rep

Louise Lynch

Wendy Knight, Secretary

Wendy Rieder, Deacon Rep

John Nugent

Rev. Carleen Gerber, Pastoral Rep

Our programs throughout 2014 included an Arts Tour, and Arts and Spirituality program; Missions included: Guatemala, Haiti; and Morning Star Campers; Environmental Committee including Residential Green buildings, Old Lyme osprey population, and Eco system health. Senator Lowell Weicker spoke on voting; There were programs on Planned Parenthood; Costs of higher education; Islam, Christianity, Judaism and the United States; an Art presentation on the Many Faces of Jesus. All in all it was a diverse lineup with something for everyone.

New programs starting in January will be a poetry and prayer study group with Tom and Ann Whittaker, a book group to discuss Thomas Piketty's Capital in the 21st Century and Becky Crosby will hold a 10 week Bible study session. There is an exciting and informative schedule for Adult Forums for 2015 as well.

A retreat for women, on "finding spaces in our busy lives;" was held in October at the home of Susie Hermanson in Old Black Point. Nina Frost led the retreat and Rev. Carleen Gerber assisted her. Nearly 30 women took part in a day of reflection. All participants were hopeful we could do retreats like this again.

We are thankful for all the hard work of the committee and church members who volunteered to speak or gave us ideas for Adult Ed forums. Please feel free to contact any committee members with ideas for future programs. We also thank the many members who contributed food items for the Forums.

Faithfully submitted,

Joy Bylan
Sharon Howell, Co Chairs

South Africa Partnership Committee Report for 2014

2014 was a year of significant change for Central Methodist Mission, our partner church in Johannesburg, South Africa. Our much loved friend, Rev. Dr. Paul Verryn, ended his tenure as pastor at Central on December 31st. With his departure came the close of Ray of Hope, the extraordinary program for refugees he began in 2006, when the first men and women fleeing violence and political persecution in Zimbabwe arrived at Central's door. They asked for shelter. Paul opened the doors and gave them more – safety, food, access to medical care, job training, legal aid and, perhaps most importantly, respect and dignity. In 2008, when a flood of unaccompanied refugee children began arriving, Paul rallied Zimbabwean teachers living at the Central and, after a single weekend of planning, classes began at a new school – the Albert Street School, housed in one of the small churches in Paul's circuit. It was a place that provided structure and promise to young people whose lives had been consumed by trauma and loss.

Paul's work was controversial with both the government and his own church's hierarchy, however during its life over 30,000 refugees and marginalized South Africans found at Central the help they needed, help that was not available anywhere else. All but five hundred refugees had moved out of Central by the end of the year, with their next place of shelter as yet unknown. The future is brighter for Albert Street School, whose students regularly achieve among the highest matriculation scores in the country. Many graduates are now studying at universities in fields as diverse as law and engineering. Our ongoing advocacy with the United Methodists Committee on Relief (UMCOR) has resulted in a new \$195,000 grant that will provide core funding for Albert Street School for the next three years.

Support from First Congregational for Paul's work at Central has been steadfast and generous, with annual gifts from the Board of Missions, the Ladies Benevolent Society and individual members and friends. We are grateful that Paul was able to visit twice during 2014, and look forward to learning more about his new role as an advocate for justice ministries conducted through the support of several Methodist Churches in the greater Johannesburg area. He is continuing to advocate for the refugees who lived in Central Methodist, and there is some hope that over the next several years an inter-denominational center might be brought into being in which housing for refugees would be made reliable and sustainable. We hope Paul will visit again in 2015 and help us to understand exactly how his "new" work is proceeding.

Respectfully submitted,
Diane Claussen, Chair

**TRIBAL CRAFTS, INC.
2014 ANNUAL REPORT**

2014 Tribal Crafts Board Members and Officers:

Stephanie Kenny, President Lee Carpenter
Ann Bertini, Vice President Marcia Dean
Mary Tomassetti, Treasurer Marta Cone
LeRay McFarland, Secretary Wendy Rieder
Karin Kiem Ted Crosby
Terry Balough David Good
Kirin Peagler

Green Grass Partnership:

Tribal Crafts Board members Stephanie Kenny and Mary Tomassetti participated in the June 2014 Green Grass trip bringing with them over \$7,000.00 to spend on the crafters and artists of the Cheyenne River Reservation.

Buying day took place in Eagle Butte, SD at the Cheyenne River Motel on Monday, June 30, 2014. Tribal Crafts was able to secure the conference room at the motel for a \$100.00 fee. With the help of those on the trip, we served lunch and dinner to all who came.

About 60 residents of Green Grass and Eagle Butte came to sell their crafts and share in a meal. As always the financial need of crafters is extensive and Tribal Crafts gratefully thanks the FCCOL community for their continued support.

Connections made through the Tree of Life:

This year, the Tree of Life community flew Lakota artist and musician Travis Harden to Palestine / Israel to participate in the October olive harvest. Travis became close with many of the Tree of Life members but especially with Alber Baseel, a musician from Palestine.

Travis and Alber both stayed with Tribal Crafts member and Green Grass alumni, Karin Kiem and her husband Allan. Performing a traditional Hunka ceremony, Travis adopted Alber into his Lakota family at the potluck dinner held to honor our all of our traveling friends. It was wonderful joining these two very different, yet very similar cultures and we hope that Alber will join us on the Green Grass trip in June 2015.

During his stay, Travis made over \$1,200 selling paintings and jewelry at the Tribal Crafts storefront as well as traveling to various schools in the community to teach music & culture. This was a huge success for him and he was so grateful and overwhelmed by the amazing spirit of community here at the FCCOL.

(continued)

December Storefront:

The annual Tribal Crafts storefront was open for five weekends in November and December followed by a sale in the Fellowship Hall at the church on December 21st. Tribal Crafts sales totaled approx. \$4,000.00; Haitian art sales totaled approx. \$2,600.00 and Tree of Life sales totaled approx. \$1,400.00 bringing in a grand total of \$8,000.00 for the partnerships, our largest amount to date.

We believe much of our success was due to some amazing advertising led by Tribal Crafts Vice President, Ann Bertini. Between the facebook posts, a live radio show, various online ads and subsequent articles in the New London Day, most local folks had heard about the storefront and word of mouth helped it spread even further. It also didn't hurt to have Travis around for an extra few weeks to help with the sales, drawing in people with his booming voice and welcoming spirit.

Local Markets:

Tribal Crafts once again made a splash last summer at local farmers markets & fairs including Ashlawn Farm, the Hadlyme Fair and the Mid-summer Festival.

We also contacted the Mashantucket Pequot Tribal Nation and secured a booth at the Schemitzun Powwow in August, a huge achievement. At the end of the weekend Tribal Crafts had pulled in over \$1,500.00 in sales and made many new friendships.

Tribal Crafts On-line:

Over the last year Tribal Crafts has worked to bring its goods to the online market place. We've established an Etsy shop and have succeeded in making several sales including a bracelet made by our good friend Rhonda Frazier that was sent overseas to the Netherlands. We are officially international!

We have also updated our website and continue to make facelifts to the partnership room here at the church.

The Tribal Crafts Board is looking forward to a successful 2015 and is already working along-side the Green Grass Committee to achieve this. We hope to be able to increase sales by gaining access to more local shops and festivals and this summer we plan on joining the Powwow trail with our new Mashantucket Pequot friends.

Mitakuye Oyasin

Respectfully submitted,

Stephanie Kenny
President

Green Grass and Eagle Butte, South Dakota - 2014

The 2014 South Dakota journey included 21 members from Old Lyme and was co-led by Stephanie Kenny and Dan Renn. For the past 29 years, over 200 community members have made the journey to the Cheyenne River Reservation. Throughout the twenty nine years of partnership, many friendships have been forged between the people of Green Grass and Old Lyme and much intercultural sharing has taken place. There is much to celebrate when our communities reunite every year!

In an effort to continue this rich relationship for the next generation, the Morning Star Camp was created for young people from our two communities. Once again, the camp was held at Bear Butte Lodge located just outside Rapid City. Bear Butte Lodge is a beautiful facility owned and operated by the Rosebud Sioux. Campers had access to various outdoor activities such as hiking and swimming.

Camp leaders, Kendall Perkins, Mattie Renn, Travis Harden and Wakinyan Harden coordinated activities which helped build group support and bonding. Winona Kasto also joined the group as Morning Stars personal chef cooking up traditional meals using buffalo meat given by the tribe. The campers painted, drummed and heard many legends which strengthened faith and friendships among the youth. Six youth from Old Lyme and six youth from Green Grass participated in the camp. Here is what two of the campers had to say about their experience:

“It was a fun time getting to spend time with our friends in South Dakota, and learning more about each and every one of them. I found their stories very interesting like how the woodpeckers would go up one by one to poke holes in the “blanket” to make stars.” ~ Liliana

“It was fun and cool to experience some of the activities on this trip. Some of my favorites included hiking up Bear Butte, doing a sweat lodge, and driving through the Badlands. Even though I experienced all of these great activities, I also get to keep good memories and Friendships!” ~ Liam

This year, we were honored to have Reverend Steve Jungkeit join us on the journey to Green Grass. It was the first year in many that a crowd began to gather to meet our new minister. After many days of house visits, shared meals and post dinner kickball sessions, Steve was honored when one of our friends from Green Grass asked if he would baptize her son. George High Elk was baptized at the Sunday evening worship service held at the Green Grass church.

“George is somewhere in his late teens or early twenties I would guess, and he was dressed in gangster garb when we spoke, with work pants, and a sleeveless t-shirt that exposed arms and an upper chest covered with tattoos. He had recently been in jail, I learned. I told him that I would be honored to baptize him, provided it was something he actually wanted. He assured me he did. And so during our evening service, I poured water over George’s head, saying the words that we’ve heard so often in our meetinghouse here in Old Lyme: George, you are a beloved child of God, and I baptize you in the name of God the Father, God the Son, and God the Holy Spirit, One God, mother of us all. I asked all of those gathered to help George on his spiritual journey, however that might look for him, even if it didn’t involve traditional Christian practices. And I reminded them that even though it was George who was being baptized, that act reminded us that we are all precious and valuable as individuals, beloved to one another and to God.” ~ Steve Jungkeit

Tribal Crafts Buying day took place in Eagle Butte at the Cheyenne River Motel. With the help of those on the trip, we served lunch and dinner to all who came. Once again, we asked Randy LaPlante and his wife to cater dinner. They were amazing as always and the Indian tacos were delicious.

(continued)

Tribal Crafts Board members Stephanie Kenny and Mary Tomassetti spent the day buying an amazing array of arts and crafts from over 50 residents of Green Grass and Eagle Butte. As always the financial need is extensive and Tribal Crafts gratefully thanks the FCCOL community for their continued support.

Over the last several years, many of our Lakota friends have been invited to join the Tree of Life journey to Palestine / Israel. Ira Bluecoat, Manny Red Bear and Winona Kasto are a few who have made this journey. This year, Tree of Life invited artist Travis Harden to participate in the October olive harvest. Travis became close with many of the Tree of Life members but especially with Alber Baseel, a musician from Palestine.

Travis and Alber both stayed with Tribal Crafts member and Green Grass alumni, Karin Kiem and her husband Allan. The Kiems have been hosting Travis and his family on and off for nearly 20 years and have been adopted into his Lakota family. On the last night of his stay, Travis also adopted his new friend Alber, performing a traditional Hunka ceremony at the potluck dinner held to honor our all of our traveling friends. It was wonderful joining all of our communities and we hope that Alber will join us on the Green Grass trip in June 2015.

What makes the Green Grass Partnership so special is hard to put into words, but for those of us who go year after year there is something amazing that transforms us. First timers Joan Overfield and Mark Bond said it best:

“What amazed me was the genuine friendship that was so visible between the Old Lyme returnees and the people of Green Grass as they greeted each other and reconnected their very different lives. Even more amazing was the welcoming spirit that folded in the newbies by both the Old Lyme folks and the Lakotas. As friends, we shared stories, listened deeply, laughed a lot, and sometimes cried.” ~ Joan

“Being a first timer I was able to stand back and watch as good friends reunited, the smiles the hugs the tears of joy. Those of us that where first timers were accepted as friends as well, one of the ladies who’s name I never knew, shook my hand, and thanked me after each meal, then on Monday which was buying day in Eagle Butte, came looking for me and gave me a hug thanking me and saying good bye.” ~ Mark

Thank you for your generous and continued support of the Green Grass and Eagle Butte communities who benefit from our partnership. We wish the families living on the Cheyenne River Reservation much abundance, harmony and unity.

Stephanie Kenny, Chairman
FCCOL Green Grass Committee

South Lyme Union Chapel

The South Lyme Union Chapel marked a year of change with gratitude and anticipation. In June, Cynthia Willauer retired to capture the energy of Steve's wish to make the FCCOL "a place of theological learning" and the chapel provides a wonderful opportunity for the larger church to realize this dream.

In the months leading up to June, the congregation prepared for the transition--saying goodbye to Cynthia in the role of pastor, while grappling with the idea of what the future might hold. In the meantime they continued to worship together in their traditional family like style while consistently serving one another and the greater community. Furthermore, they enjoyed being involved in the life of FCCOL by participating in church activities and supporting its ministries.

Susan Buehler continues to serve as Chapel organist and Marilyn Schutt graciously stepped in to play piano when Susan broke her leg. In addition, the chapel has welcomed Sue Wilbur who on occasion, shares her time and musical talents with the congregation. In December, Sue and the Niantic Bay Bell Ringers joined us for worship for a beautiful Advent service. Also in December, the Chapel invited the LOLHS Select Singers to join us for the annual Carol Sing.

Collectively, the Chapel participated in several outreach ministries throughout the year including supporting the New London Homeless Hospitality Center, preparing and serving a meal at the New London Community Meal Center, and collecting nonperishable items for local food pantries. Individually, congregants participate in community volunteer activities and quietly support members of the congregation at the same time. Members are also very active in the White Elephant sale during which they continue to organize and run the refreshments table.

Upon Cynthia's retirement the Chapel hosted several guest pastors. In August, they invited me, Erin Grayson, a seminarian, to fill an interim position for the 2014-2015 academic term. I joyfully accepted because it offers me invaluable ministerial experience, but also an opportunity to express my gratitude to FCCOL, where I served as an intern last year, and to SLUC for graciously offering continued learning. I lead worship and preach three Sundays per month, leaving one or two Sundays open for visiting seminarians. The Chapel has welcomed Jamall Calloway, Margaret Fox, Miriam Samuelson, and Sarah Stewart. So far, the arrangement has been a blessing for both the seminarians and the congregation alike.

The Chapel is a special place, and indeed well suited to promote theological learning in creative ways. The experience has allowed me to grow into my ministry practically, but moreover it has deepened my understanding of what it means to be the Church. I realize that it's so much more than people gathered for worship on a Sunday morning in one building or another, or an organized well-functioning institution; instead it's about community using their individual gifts to care for each other and God's good creation. As Paul said, we are all members of one body, each contributing her unique gifts for the good of the whole.

Moving forward, there are exciting opportunities for FCCOL youth to participate in intergenerational worship at the Chapel, and as always, anyone from the FCCOL congregation is most welcome join us anytime. The Chapel congregants have embraced the "cousin" analogy to describe their relationship with FCCOL. We are all members of the same family, and although we may have different "houses," we have the same mission: to lovingly care for each other as members of the body of Christ.

Peacefully and Respectfully Submitted, Erin Grayson

COMMITTEE ON THE ENVIRONMENT 2014 ANNUAL REPORT

During 2014, the Committee on the Environment continued to discuss and support various key environmental issues affecting the church, the Old Lyme community and the world at large. Within the church, the committee supported the installation of solar panels. In April Ted Crosby, Sid Whelan and Linda Clough met with Selectwoman Bonnie Reemsnyder and Adam Whelchel of the Nature Conservancy about sponsoring a town-wide study on coastal climate change. In September, many members made banners and rode buses to New York City for the Climate Change march.

The committee has discussed and written newsletter articles on many environmental subjects. We invited Rev. Chris Solimene to discuss how to involve young people in environmental projects. We have supported efforts toward divestiture of investments based on non-renewable resources. We have discussed and written on recycling and storm preparedness.

Sid Whelan attended the Connecticut Conference of Environmental Ministries in Guilford during which George Stone reported on the Food, Justice and Faith conference in New Haven.

The Committee continues to work toward UCC certification as a "green" church and toward that end has invited George Stone to its meeting in February 2015.

The Committee sponsored several adult forum speakers on environmental themes. In November, Derek Turner spoke on ecosystem health, presenting several examples of healthy v. unhealthy landscapes. The committee has set up a series of environmental speakers for January 2015: Sidney Gale will speak on resilience and sustainability in land use, Tom Degnan (Old Lyme tree warden) will speak on tree maintenance and storm related issues, and Nancy Alderman will speak on the environmental and human costs of pesticides. New member Matt Winkler from the Properties Committee will continue to help us focus on saving power within the church.

We thank all members of the Committee for their time and effort and welcome anyone in the congregation to join the committee and work toward our goals.

Submitted by Linda Clough.

Ladies Benevolent Society

The LBS founded over 100 years ago continues to grow and this year we welcomed two new members to our Board, Nick Westbrook and Ken Cavanaugh.

Our monthly luncheons continued thru the spring and fall and were well attended by our members, friends and the local community. We are grateful for the food donations to the pantry as well as disposable diapers.

The 101st White Elephant Sale broke all previous records again with a NET total of \$69,812 which exceeded the record set in 2013 by more than \$1300. We are exceedingly grateful to Bob Davis and Susan Buehler for their energy and leadership.

The Elephants in Winter Sale continued this year and the sewing group led by Nathalie Fogg has continued to make lovely items that are enjoyed by all.

We appreciate the support of Joan Kelley and Mark Testori who never fail to support us.

Our Board consists of Susan Anctil, Marianne Baez, Ken Cavanaugh, Jane Hall, Susan Immordino, Sue Lardner, Jane Marolda, Jeanne Nichols, Hildegard Rennard, Judy Simmons, Priscilla Swanson and Nick Westbrook.

Respectfully submitted
Jane Stubenbord, President LBS

LADIES BENEVOLENT SOCIETY ANNUAL FINANCIAL REPORT 2014

LBS NEEDS	BUDGET 14	ACTUAL 14	BUDGET 15
WES Expenses	\$ 12,000.00	\$11,689.48	\$ 12,000.00
Postage, paper	50.00	23.74	50.00
Luncheon expenses, programs	2,500.00	2,088.10	2,500.00
Kitchen equipment and supplies	150.00	430.38	150.00
Floors, professional cleaning	1,000.00	0	0
Miscellaneous (un-planned expenses)	500.00	10,534.44	500.00
Sewing Group supplies	300.00	406.89	300.00
	16,500.00	25,173.03	15,500.00

MISSION GIFTS

FCCOL Pledge	\$ 20,000.00	20,000.00	20,000.00
FCCOL Christian Education	4,000.00	4,000.00	4,000.00
FCCOL Parsonage Maintenance Fund	3,000.00	3,000.00	1,000.00
FCCOL Sunday Coffee Hour	350.00	350.00	350.00
FCCOL Major Maintenance Escrow Fund	5,000.00	5,000.00	5,000.00
FCCOL Memorial Music Fund	1,000.00	1,000.00	1,000.00
FCCOL Ministers' Discretionary Fund	5,000.00	5,000.00	5,000.00
Camp Claire Lyme	1,000.00	1,000.00	500.00
Center For Hospice Care SECT, Norwich	500.00	500.00	500.00
Church World Service Emergencies	3,000.00	3,000.00	3,000.00
Church World Service One Great Hour of Sharing	1,000.00	1,000.00	0
The Connecticut Hospice Branford	500.00	500.00	500.00
Crosby Fund for Haitian Education	3,000.00	3,000.00	3,000.00
Estuary Council of Seniors, Old Saybrook	1,000.00	1,000.00	1,000.00
Hospice & Palliative Care, Middletown	500.00	500.00	500.00
Koinonia Farm, Americus, Georgia	500.00	500.00	0
Literacy Volunteers - Valley Shore CT	1,000.00	1,000.00	500.00
Lymes Senior Center	500.00	500.00	500.00
Lymewood Elderly Housing	200.00	200.00	200.00
New Life Prison Ministry	3,200.00	3,200.00	3,200.00
New London Homeless Hospitality Center	5,000.00	5,000.00	5,000.00
New London Soup Kitchen	0	0	150.00
Old Lyme Visiting Nurse Association, Inc.	500.00	500.00	500.00
The Riverfront Children's Center, Inc.	2,000.00	2,000.00	2,000.00
A Sacred Place, The Barbara Fund	1,500.00	1,500.00	1,500.00
Soup Kitchen at FCCOL	1,000.00	1,000.00	0
Tree of Life Conference	1,000.00	1,000.00	1,000.00
Tribal Crafts	1,000.00	1,000.00	1,000.00
VFW Post #1467 Veteran's Relief Fund	1,000.00	0	0
Veteran's Housing (Major E. Good) New London	2,000.00	2,000.00	2,000.00
Safe Futures New London	2,000.00	2,000.00	2,000.00
Warm the Children	0	500.00	500.00
SUB TOTALS	71,250.00	70,750.00	65,400.00
Plus LBS NEEDS (Above)	87,750.00	95,923.03	80,900.00

INCOME

WES Gross	81,501.74
EIW – general, net	1,588.03
Sewing Group – EIW	1,503.01
Sales during year	596.99
Int. Divdnds on Accts. As of 11/30/14	1,402.16
TOTAL	86,591.93

ASSET BALANCES

12/31/14 Webster checking	12,901.98
11/30/14 Merrill Lynch portfolio	19,727.63
10/31/14 Vanguard Account	14,696.04
TOTAL ASSETS	47,325.65

Submitted by:

Marianne Baez, LBS Treasurer

CHURCH CLERK'S REPORT

Year Ending December 31, 2014

A. STATISTICS - RECORDS

1. ANNUAL MEETING: JANUARY 25, 2015 – called as specified in Article II of the Church Bylaws (revised).

Subject Matter: Selected reports by church officers, Board and Committee Members; Adoption of 2015 church Budget.

2. MEMBERSHIP:

Active Members: Number reported on December 31, 2013 - 858

Additions During Year – New Members;

By Confirmation	13
On Profession of Faith	28
By Letter of Transfer	1
Membership Reactivated	3
Record adjustments	<u>0</u>
Total Additions	55

Losses During Year:

By Death	9
By Transfer to Inactive Status	22
By Letter of Transfer	1
Membership Terminated by	3
Relocation or Request	<u>—</u>
Total Losses	35

Number on Active List as of December 31, 2014: 878

3. BAPTISMS: 7

4. MARRIAGE CEREMONIES PERFORMED BY MINISTERS: 12

B. RECORD RESEARCH

During 2014 there were no requests for information from church records.

C. ACKNOWLEDGEMENTS

Much appreciation is extended to Joan Kelley, the clergy and the office staff for their assistance in maintaining the vital statistics of the church.

Respectfully submitted,

Joan C. May, Church Clerk

Confirmands May 11, 2014

Abigail Berger
Margaret Berger
Emerson Cole
Alison Christensen
Giselle Ingabire
Julie Golebiewski
Daniel Marinelli
Anna Mesham
Michael Morris
Camron Roberts
William Roberts
Noelle Stanland
Mackenzie Swaney

New Members May 18, 2014

Sousan Arapeh
Christine Arpin
Isabel Ellery
Rebecca Griffin
Drew Hudson
Emily Knight
Catherine Leonard and Michael Gomez
David Ogle
Dan and Hazella Pease
Robin Sedgwick
Erin and Richard Wyman

New Members November 9, 2014

Pam Birmingham
Michele and John Delmhorst
Steve and Diane Hart
John McGannon
Jane Piro and Jeff Sund
Rick Strickhart
Paul and Karen Stigliano
Mary Tomassetti
Charles and Elspeth Woodward

Nominating Committee Report			
January 2015, Annual Meeting			
Page 1 of 3			
Board or Committee	Term	Continuing Members	Nominations
Officers			
Church Clerk	1 year 2015	Joan May	
Asst. Church Clerk	1 year 2015	Greg Hack	
Treasurer	1 year 2015	Bob McCracken	
Asst. Treasurer	1 year 2015	Jeanne Thomas	
Financial Secretary	1 year 2015	Allan Kiem	
Historians	1 year 2015	Bob & Betsey Webster	
	1 year 2015	Carolyn Wakeman	
Exigency Committee	3 years 15, 16, 17	Don Gonci	
Board of Trustees			
Board of Trustees	3 years 13,14,15	Charlie Hosley	
Board of Trustees	3 years 13,14,15	Connie Hurtt	
Board of Trustees	3 years 13,14,15	Russell Learned	
Board of Trustees	3 years 14,15,16	Carol Levy	
Board of Trustees	3 years 14,15,16	Allison Hine	
Board of Trustees	3 years 14,15,16	Lee Carpenter	
Board of Trustees	3 years 15,16,17		Steve Brinkman
Board of Trustees	3 years 15,16,17		Maria DiFiore
Board of Trustees	3 years 15,16,17		Tom Grant
Board of Deacons			
Board of Deacons	3 years 13,14,15	Nick Westbrook	
Board of Deacons	3 years 13,14,15	Wendy Rieder	
Board of Deacons	3 years 13,14,15	Alexandra Eadie-Friedmann	
Board of Deacons	2 year 14,15	Dan Renn - 2 years	
Board of Deacons	2 years 15,16	Julile Martel - 2 years	
Board of Deacons	2 years 15,16	Mark Bond - 2 years	
Board of Deacons	3 years 14,15,16	Diane Claussen	
Board of Deacons	3 years 14,15,16	Lina Tuck	
Board of Deacons	3 years 15,16,17		Scott Mahon
Board of Deacons	3 years 15,16,17		Stephanie Kenney
Board of Deacons	3 years 15,16,17		Jane Stubenbord
Board of Deacons	3 years 15,16,17		Susan Lang
Board of Stewardship			
Board of Stewardship	3 years 13,14,15	George Clough	
Board of Stewardship	3 years 13,14,15	Lee Whitaker	
Board of Stewardship	3 years 13,14,15	Ken McGrath	
Board of Stewardship	3 years 14,15,16	Barbara Smith	
Board of Stewardship	3 years 14,15,16	Emily Fisher	
Board of Stewardship	2 years 15,16		Paul Stigliano - 2 years
Board of Stewardship	3 years 15,16,17		Sandy Long
Board of Stewardship	3 years 15,16,17		Matt Winkler
Board of Stewardship	3 years 15,16,17		Chuck Lynch

Nominating Committee Report			
January 2015, Annual Meeting			
Page 2 of 3			
Board or Committee	Term	Continuing Members	Nominations
Board of Missions			
Board of Missions	3 years 13,14,15	Jennifer Fries	
Board of Missions	3 years 13,14,15	Stephanie Hall	
Board of Missions	3 years 13,14,15	Bob Potter	
Board of Missions	3 years 14,15,16	Fred Behringer	
Board of Missions	3 years 14,15,16	Robert Shook	
Board of Missions	3 years 14,15,16	Leslie Anderson	
Board of Missions	3 years 15,16,17		Mary Ann Kistner
Board of Missions	3 years 15,16,17		Britt Sinay
Board of Missions	3 years 15,16,17		Karen Stigliano
Church Council			
Church Council	3 years 13,14,15	Chris McLean	
Church Council	2years 14,15	Janice Thaxter - 2 years	
Church Council	3 years 14,15,16	Bruce Anderson	
Church Council	3 years 15,16,17		Faye Richardson
Church Council	3 years 15,16,17		Marvin Schutt
Church Council	3 years 15,16,17		Mike Gentry
Board of Youth Education			
Board of Youth Education	3 years 13,14,15	Justine Lavoie	
Board of Youth Education	3 years 13,14,15	Cathy Gentry	
Board of Youth Education	3 years 13,14,15	Josh Edmed	
Board of Youth Education	3 years 14,15,16	Suzi McCormack	
Board of Youth Education	3 years 14,15,16	Lisa Doggart	
Board of Youth Education	3 years 14,15,16	Gail Stevens	
Board of Youth Education	3 years 15,16,17		Deb Eastman
Board of Youth Education	3 years 15,16,17		Lucia Kelsey
Board of Youth Education	3 years 15,16,17		Lori Kolar
Board of Adult Education			
Board of Adult Education	3 years 13,14,15	Joy Bylan	
Board of Adult Education	3 years 13,14,15	Wendy Knight	
Board of Adult Education	3 years 13,14,15	Louise Lynch	
Board of Adult Education	3 years 14,15,16	Mimi Gourlay	
Board of Adult Education	3 years 14,15,16	John Nugent	
Board of Adult Education	2 years 15,16		David Ogle - 2 yrs
Board of Adult Education	3 years 15,16,17		Patsy McCook
Board of Adult Education	3 years 15,16,17		Ellen White
Board of Adult Education	3 years 15,16,17		Eunice Mahler
Board of Music & Arts			
Board of Music & Arts	3 years 13,14,15	Jeanne Nichols	
Board of Music & Arts	3 years 13,14,15	Sandy Tolderlund	
Board of Music & Arts	3 years 13,14,15	Cheryl Sorensen	
Board of Music & Arts	3 years 14,15,16	Don Male	
Board of Music & Arts	3 years 14,15,16	Marilyn Nelson	
Board of Music & Arts	3 years 14,15,17		Janet Funke
Board of Music & Arts	3 years 15,16,17		Arthur Pope
Board of Music & Arts	3 years 15,16,17		Breck Lardner
Board of Music & Arts	3 years 15,16,17		Dan Stevens

DEACONS EMERITI

*Gertrude Barney
*Harold Berggren
*Marian Biglow
*Jay H. Boltz
*Marie Boltz
Joan Bonvicin
*Betty Brown
Barry Buehler
Susan Buehler
*Clifford Champion
*Else Champion
*Miriam Champion
*Alfred R. Clark
*Simone Clark
Robert Davis
Judy Downs
*Susan Holly Ely
*Mary Emerson
*Ella Mae English
Betty R. Fatone
Emily Fisher
Nathalie Fogg
*Janet Folk
*Harry Forsdick
*Helen Forsdick
*Charles Gasteyer
Michael Gentry
Don Gonci
*Philip Gordon
Len Green
Marge Green
Ralph Griffin
Mimi Griffin
*Matthew Griswold
*Roger Grover
*Sally Grover
*Charlotte Handy
*Adlai Hardin
*Amy Henry
*Theodore Hillhouse

*Deceased

*Harriet Hoag
Robert D. Johnson
* Mary Jane Johnson
Joan Kratzert
Julie Kuja
*Russell Lewis
*Robert F. Link
Anne Losea
Howard Losea
Chuck Lynch
Louise Lynch
Henry May
Joan May
*Martha McCanne
Robert McCracken
Sally McCracken
Ramona McNamara
Beatrice Minson
James Noyes
*Helen Noyes
*Myrtie Peck
Barbara Perkins
Ned Perkins
*Gloria Rathbone
*N. Rutherford Sheffield
Judith Simmons
Philip N. Simmons
*John Speirs, Sr.
*Helen Speirs
Douglas Stoehr
*John Swanson
*Philip Symonds
*Anne Traver
*Cynthia Twining
*Kinsley Twining
*Dorothy Umberger
*Willis H. Umberger
*Helen Weidler
*Murray T. Wellman
*Jean West
*George Wilcox
*Ellen Woodhead